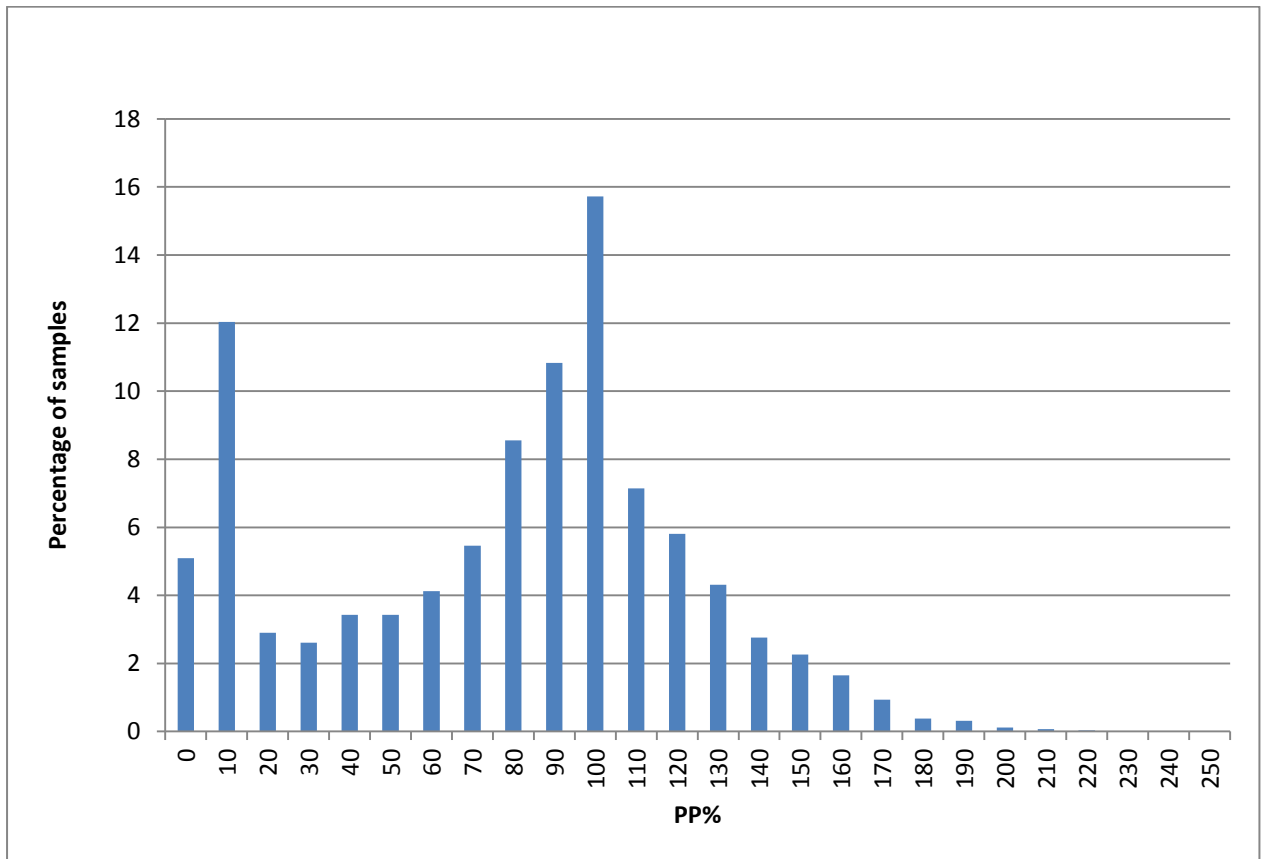


BRSV serology

Histogram based on 2009 to 2013 Bovine Respiratory Syncytial Virus antibody ELISA results

(all bovine animal types included, n=5751)



Once tested, ELISA results are recorded as Percent Positivity: PP%

Neg/Pos Cut-off : PP% =20

25% of positive samples have PP% <= 72

50% of positive samples have PP% <= 92

75% of positive samples have PP% <= 110

All laboratory testing done at CVRL, Backweston.