

Meat Market Report

23/07/18 - 29/07/18

Week

30



**An Roinn Talmhaíochta,
Bia agus Mara**
Department of Agriculture,
Food and the Marine

MARKET SUMMARY

Beef

Deadweight Prices c/100Kg (Including VAT)

	U3	U4	R3	R4	O3	O4	P+
Steers	412.5	411.3	403.0	402.1	383.9	385.3	360.1
Heifers	429.6	429.4	414.3	414.9	397.6	397.3	364.7
Young Bulls	413.2	415.0	401.2	399.6	372.4	0.0	363.9
Cows			339.1	338.5	314.7	315.3	301.9

Liveweight Prices

*Bull Calf Average Price	€178.5 per head (Excluding VAT)
**Young Store Average Price	€213.0 per 100kg (Excluding VAT)
***Yearling (male & female) Price	€183.5 per 100kg (Excluding VAT)

* Aged 8-28 days ** Aged 180-364 days, Male & Female ***age 365-730 days

Slaughtering

35,606 cattle slaughtered this week, of which steers were 14,331 (40%), heifers 8,847 (25%), young bulls 3,438 (10%) and cows 8,309 (23%). Total slaughter is 991,339 compared to 957,626 in 2017, an 3.5% increase.

Live Trade

2,152 cattle were exported in the week commencing 23/07/2018*;1,439 to EU (Except NI). Live exports for 2018 amount to 189,927 compared to 144,691 in 2017, up 31% on 2017 levels.

*This data is provisional and subject to revision.

The next meeting of the Management Committee for the Common Organisation of Agricultural Markets (Animal Products Sector) is 30 August 2018

CONTENTS:

Page 2: Market Summary Beef
 Page 3: Market Summary Other Meats
 Page 4: Beef Price and Slaughter Summary
 Page 5: Comparative Beef Prices
 Page 6: Steer and Young Bull Price
 Page 7: Heifer and Cow Graphs
 Page 8: Price and Slaughter Graphs
 Page 9: Liveweight Beef Graphs

Page 10: Beef Export Maps
 Page 11: Beef Export Info
 Page 12: Market Access Update
 Page 13: Pig Price Graph
 Page 14: Pig Slaughtering
 Page 15: Sheep Prices
 Page 16: Sheep Slaughtering
 Page 17: Poultry Slaughtering

MARKET SUMMARY

Pigmeat

Grade E Pig
Prices (Ex.
VAT)

The Grade E Pig price for week commencing 23/07/2018 was €139.12 per 100Kg. This compares to €169.56 in the same week last year, a 18.0% decrease.

[Further details available on page 13](#)

Slaughtering

63,463 pigs were slaughtered in week 30 of which 1,441 were sows. The cumulative figure for pig slaughterings in 2018 is 1,960,283 which is up 4% against the same point last year.

[Further details available on page 14](#)

Sheepmeat

Sheepmeat
Prices (Ex.
VAT)

The national average price for the week commencing 23/07/2018 was €489.22 per 100Kg, an increase of 6.4% over the same week last year.

[Further details available on page 15](#)

Slaughtering

61,755 sheep were slaughtered at sheep export premises the week commencing 23/07/2018, compared to 58,712 in the same week of 2017. Sheep slaughterings for 2018 is 1% up on 2017 at 1,583,623 head.

Live Trade

Total live exports stand at 1429 head up to the 19th of July.

Poultry

Slaughtering

Cumulative poultry slaughterings for 2018* stand at 52,534,571 birds at the end of week 28, up 2.5% compared to the same period last year.

[Further details available on page 17](#)

*Latest Figures are provisional and subject to change

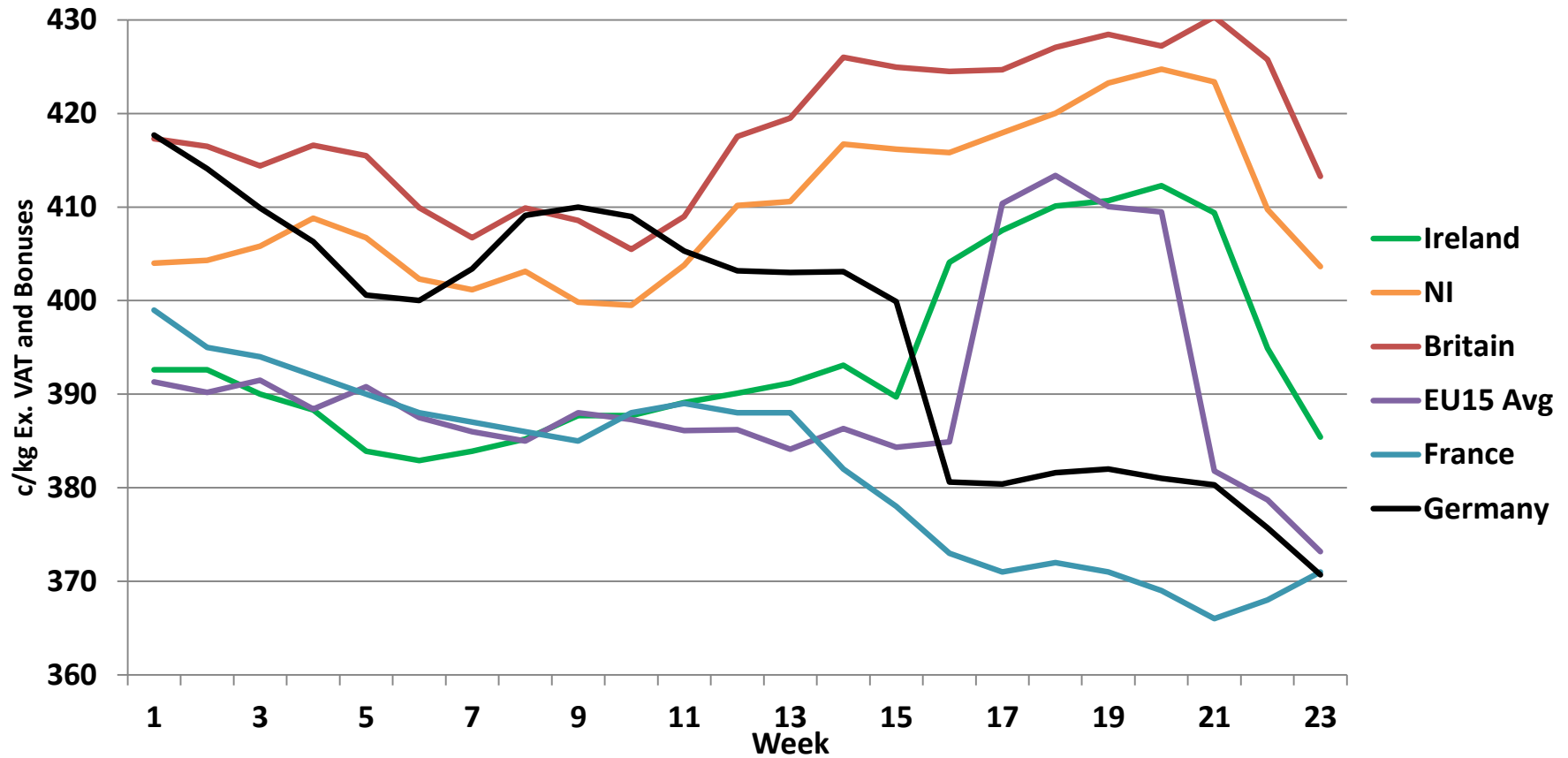
Dead Weight Prices	W/C	W/C	Same week 2017	% change prev week	% change 2017
	23/07/18	16/07/18	24/07/17		
Steers (R3) (c/kg)	382.4	385.4	396.3	-0.8%	-3.5%
Heifers (R3) (c/kg)	393.1	396.7	406.5	-0.9%	-3.3%
Young Bulls (U3) (c/kg)	392.0	394.6	402.8	-0.6%	-2.7%
Cows (04) (c/kg)	299.1	302.3	322.1	-1.1%	-7.1%

Live Weight Prices	W/C	W/C	Same week 2017	% change previous week	% change 2017
	23/07/18	16/07/18	24/07/17		
Yearlings (Male) (Aged 365 - 730 days) - (€/100Kg)	181	183	197	-1.1%	-8.1%
Yearlings (Female) (Aged 365 - 730 days) - (€/100Kg)	186	192	212	-3.1%	-12.3%
Young Stores (Male & Female) (Aged 180 - 364 days) - (€/100Kg)	213	221	234	-3.6%	-9.0%
Bull Calf (€/head) Dairy	150.3	159.8	145.2	-6.0%	3.5%
Bull Calf (€/head) Beef	206.8	191.3	280.3	8.1%	-26.3%
Bull Calf (€/head) Average	178.5	175.6	212.8	1.7%	-16.1%

Slaughter Figures	% of weekly figures	W/C	Same week 2017	Year to Date		Change 2018 v 2017	
		23-Jul-18		2018	2017	Head	%
Steers	40.2%	14,331	14,497	345,920	345,535	385	0.1%
Cows	23.3%	8,309	6,611	221,486	213,295	8,191	3.8%
Heifers	24.8%	8,847	7,620	276,408	262,701	13,707	5.2%
Young Bulls	9.7%	3,438	2,396	129,368	119,963	9,405	7.8%
Mature Bulls	1.9%	681	614	18,157	16,132	2,025	12.6%
Total	100%	35,606	31,738	991,339	957,626	33,713	3.5%

Live Exports	W/C	Same week 2017	W/C	Year to Date		Change 2018 v 2017	
	23-Jul-18		16-Jul-18	2018	2017	Head	%
Northern Ireland	306	463	205	9,845	15,570	-5,725	-37%
EU Except NI	1,439	684	2,498	165,973	115,064	50,909	44%
Third Countries	407	1,899	3,719	14,109	14,057	52	-
Total	2,152	3,046	6,422	189,927	144,691	45,236	31%
Calves YTD:		150,495	Adult Cattle YTD:		39,432		

Irish Deadweight Cattle Prices vs Selected Other Markets, 2018

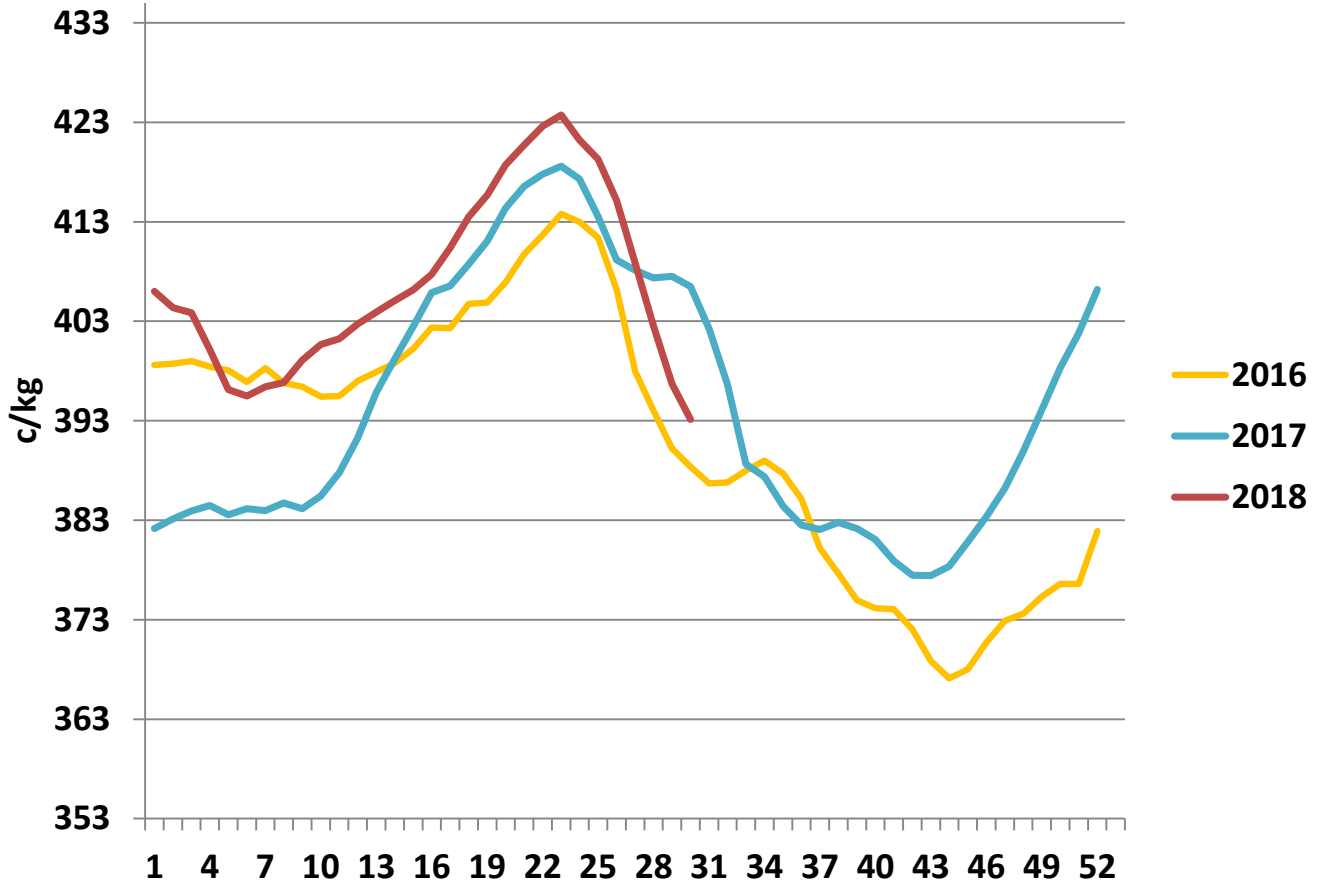


Livestock Pricing

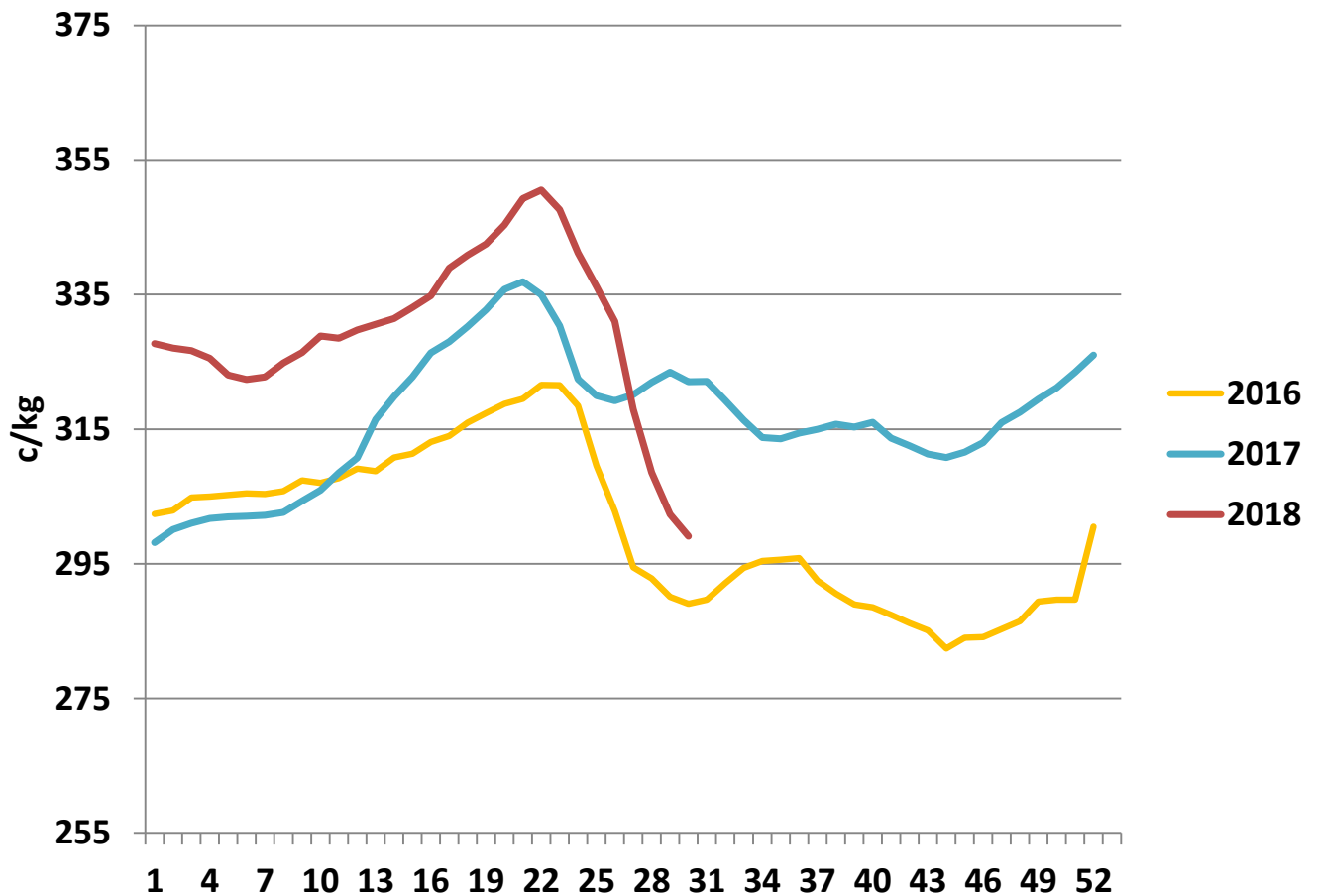
	Ireland	NI	Britain	EU 15 Average	France	Germany
W/C						
16/07/18	385.4	403.64	413.29	373.16	371	370.7

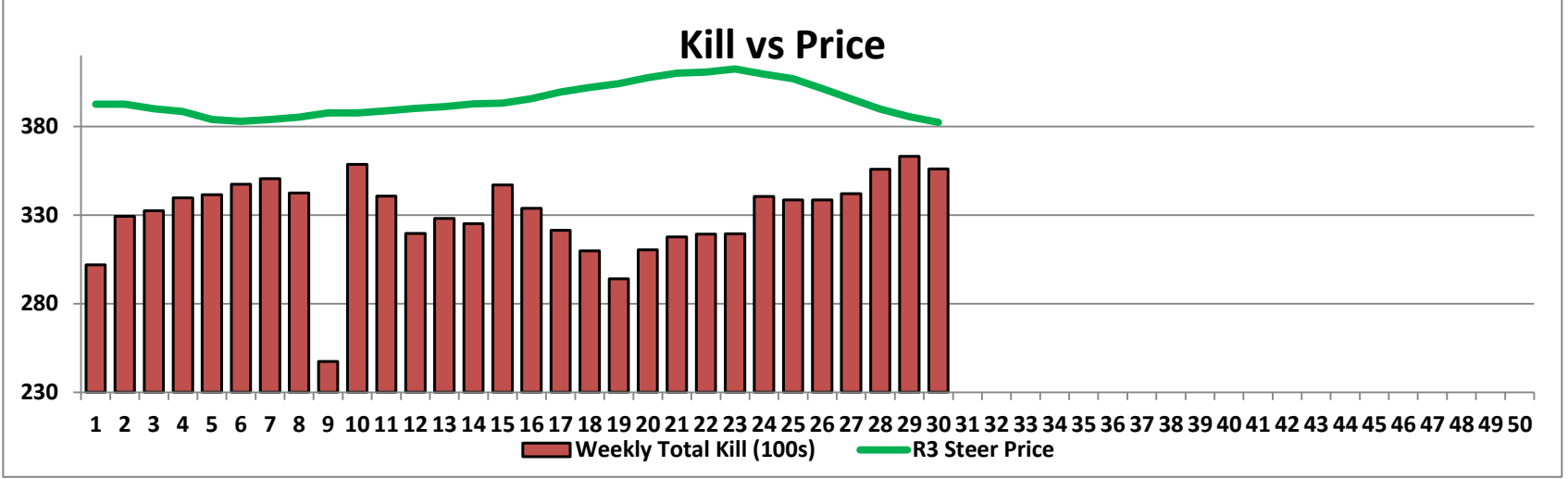
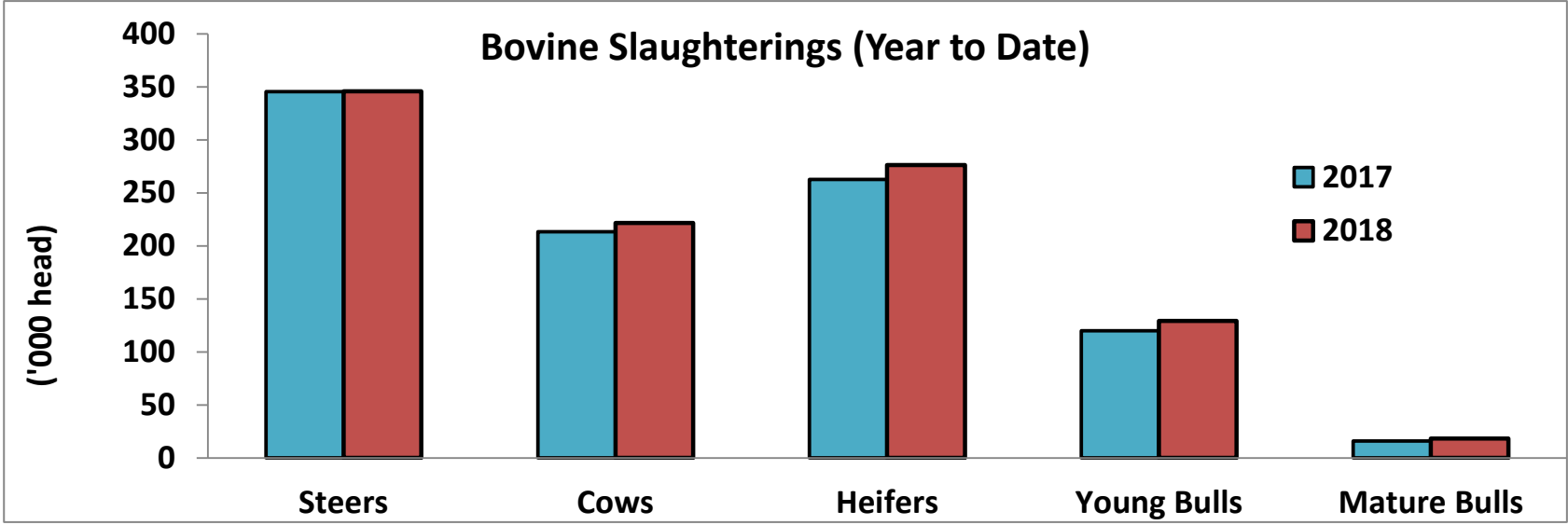
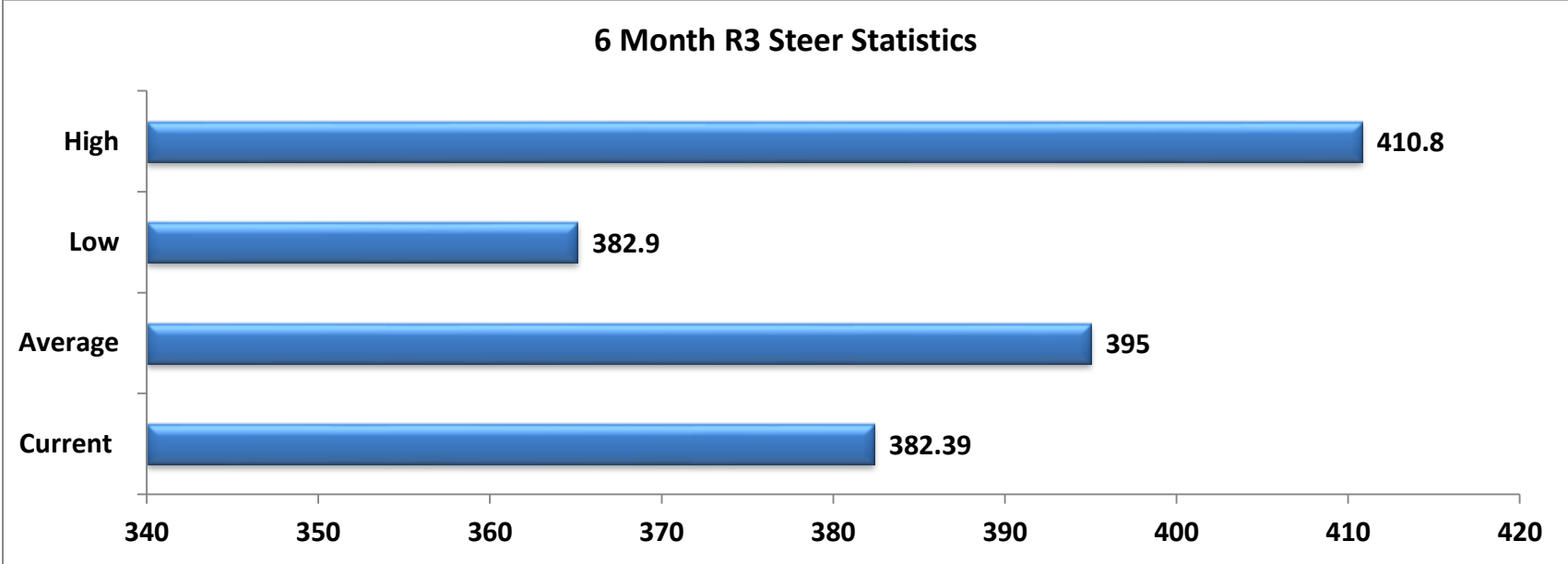
All prices ex. VAT and bonuses. Prices are c/kg most recent available for R3 Steers for Ireland, NI & GB, R3 Young Bulls for EU, France & Germany.

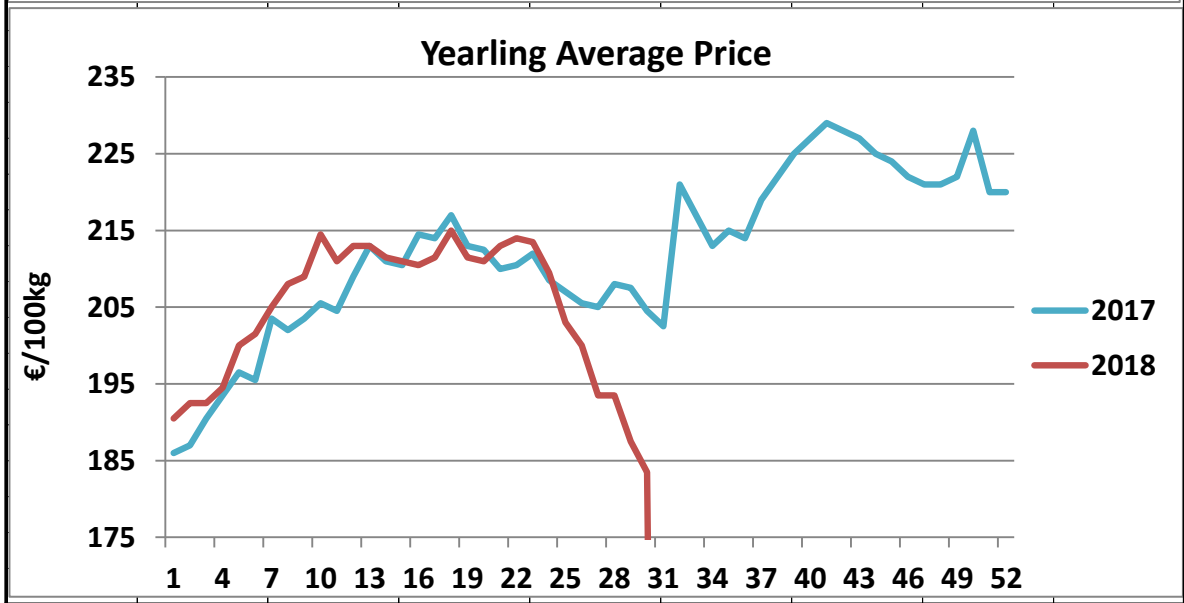
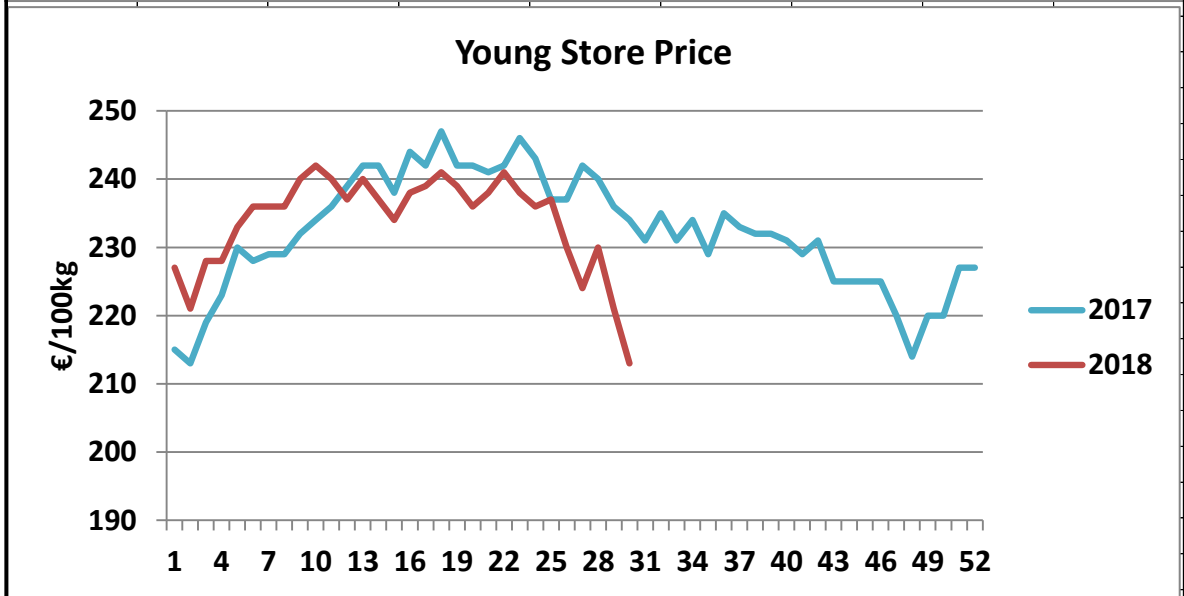
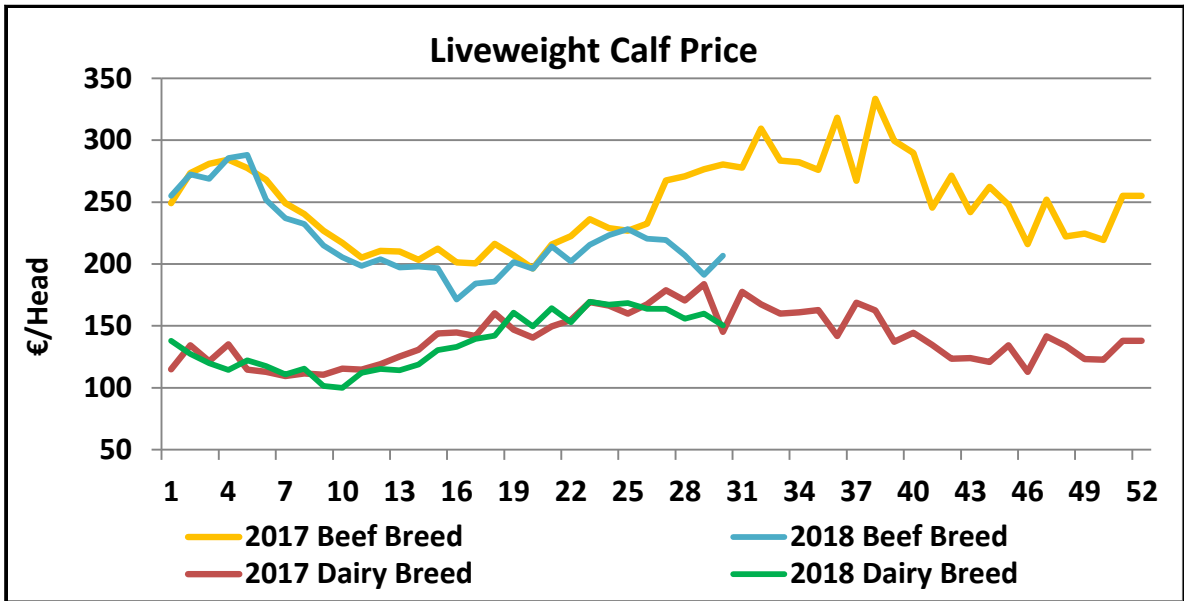
R3 Heifer prices ex. VAT



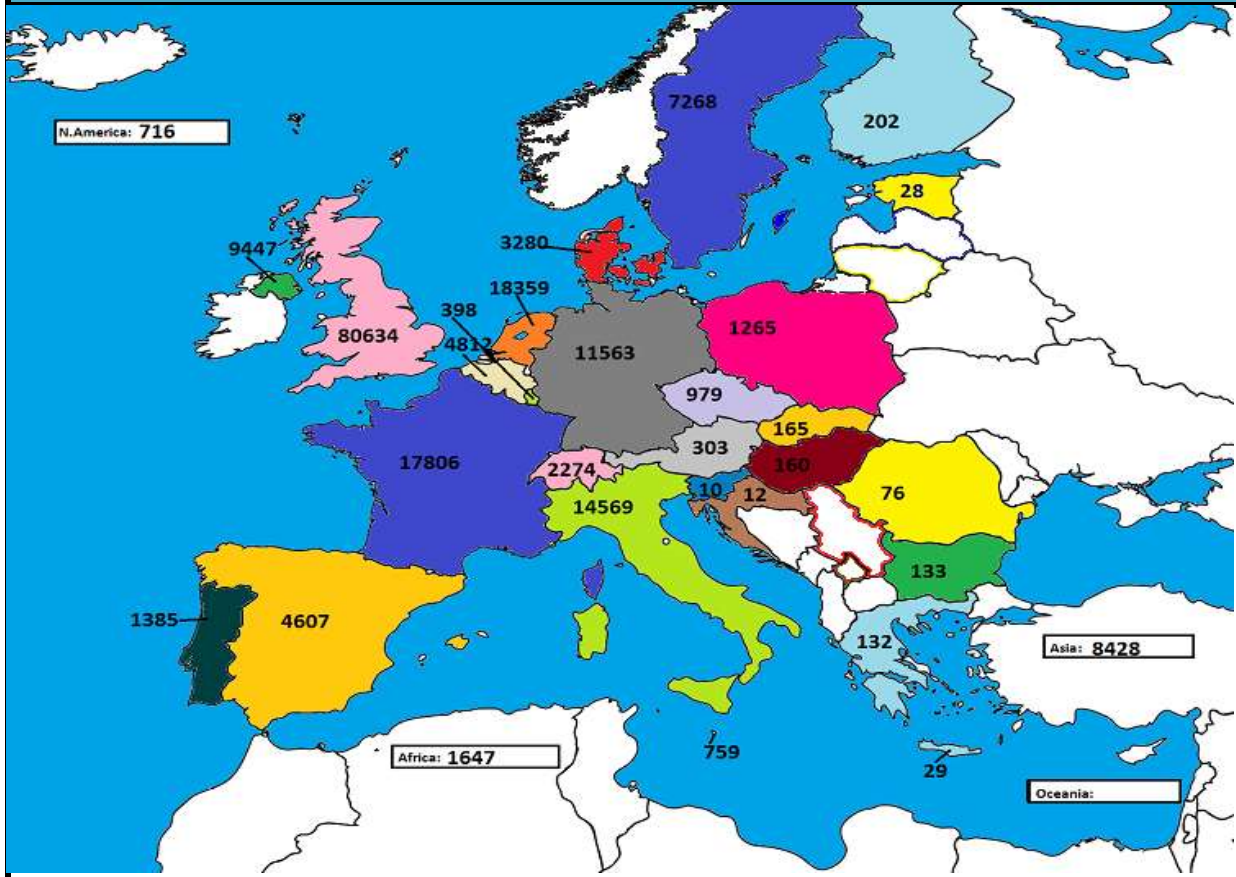
O4 Cow prices ex. VAT



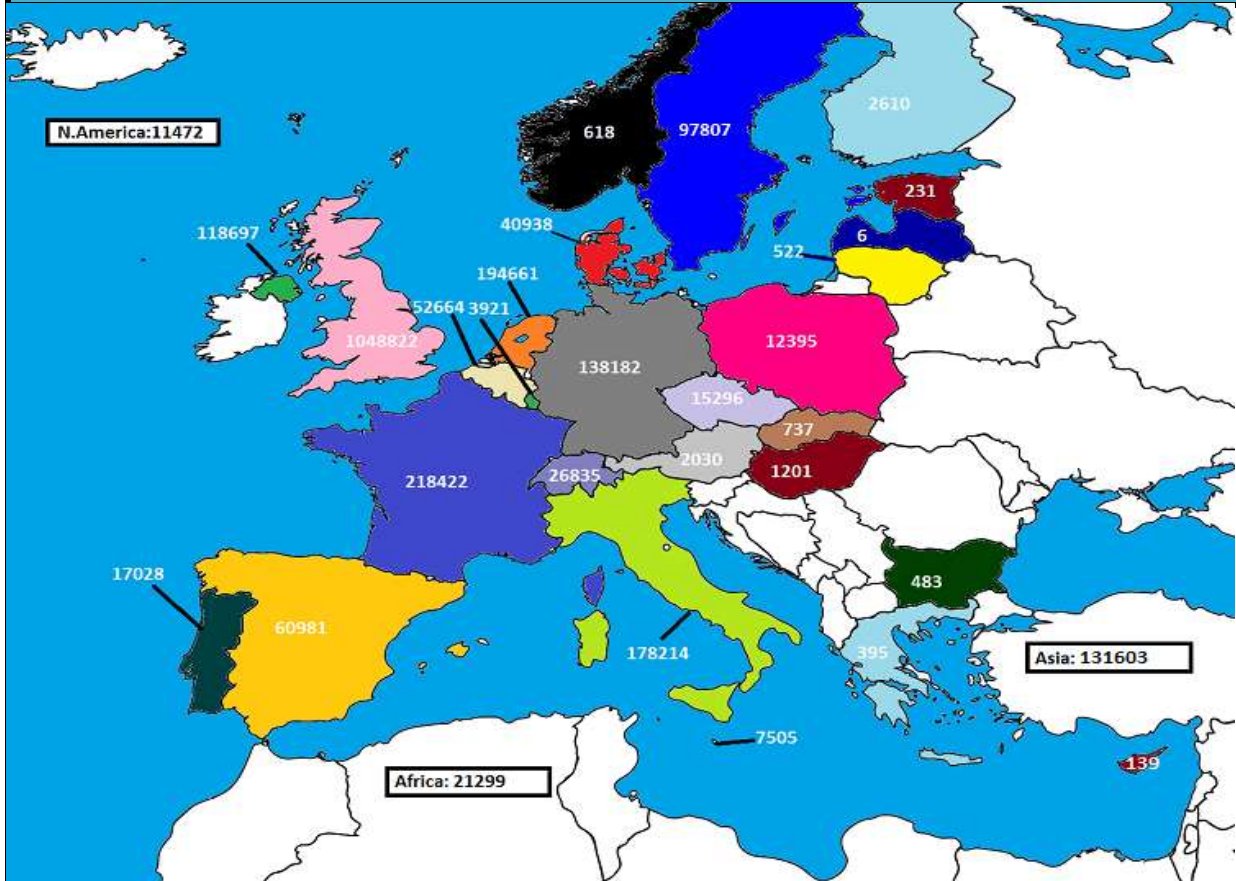




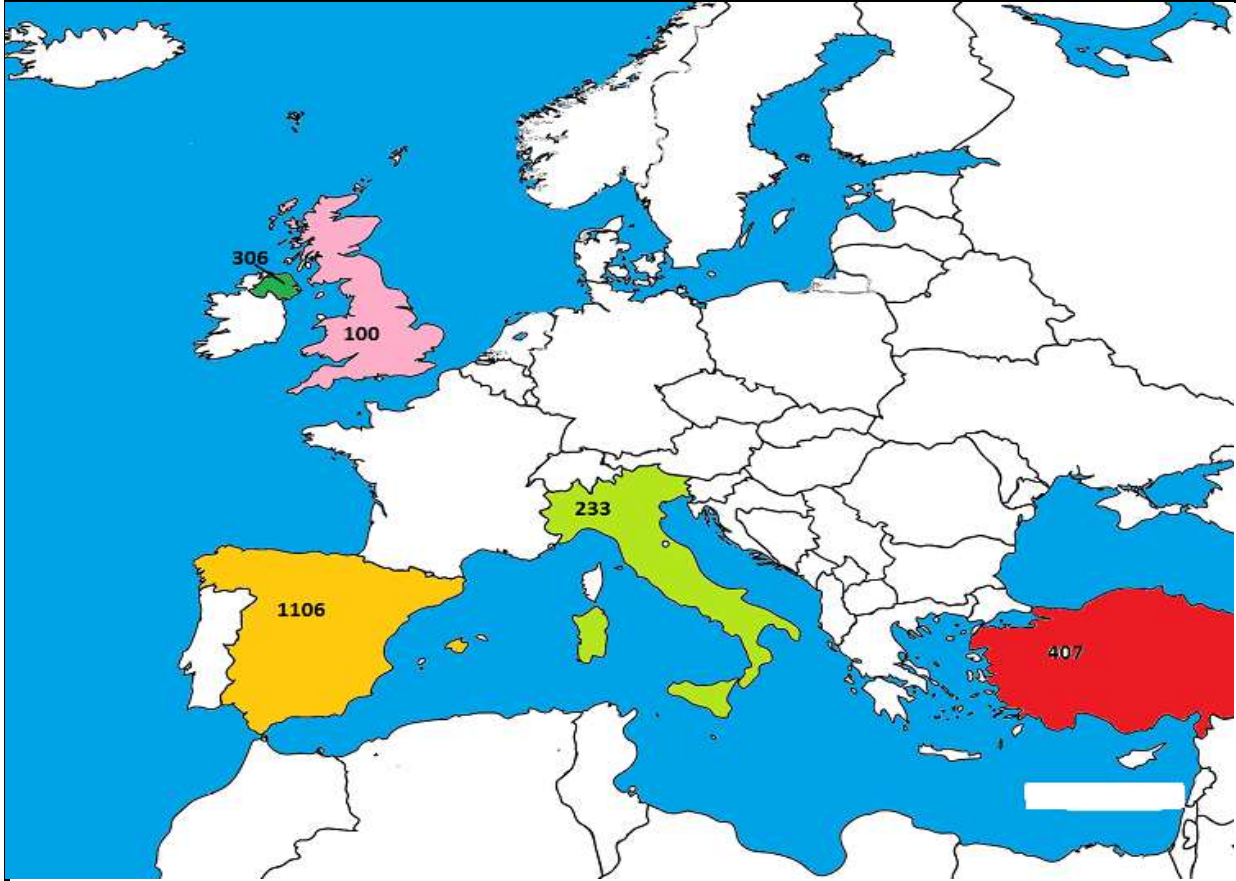
May 2018 Beef exports, €000 (CSO figures)



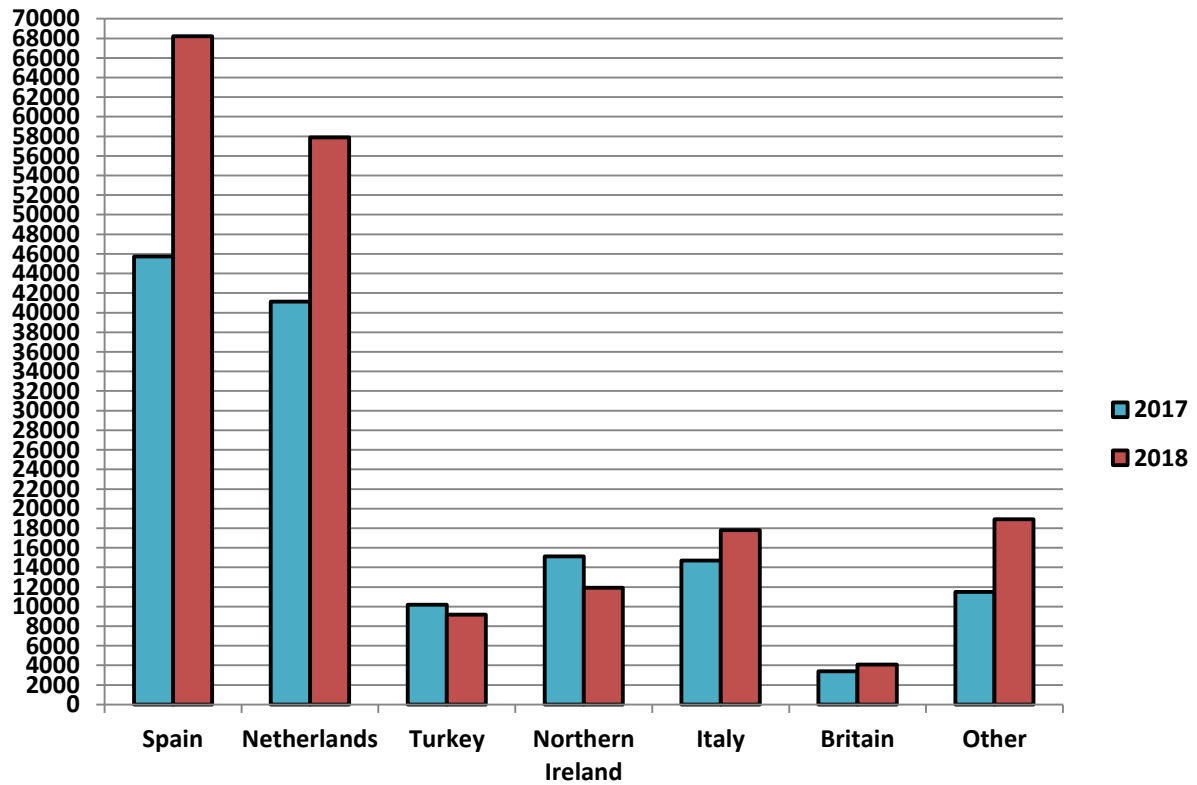
Cumulative beef exports to Dec 2017, €000 (CSO figures)



Cattle exported, w/c 23/07/18

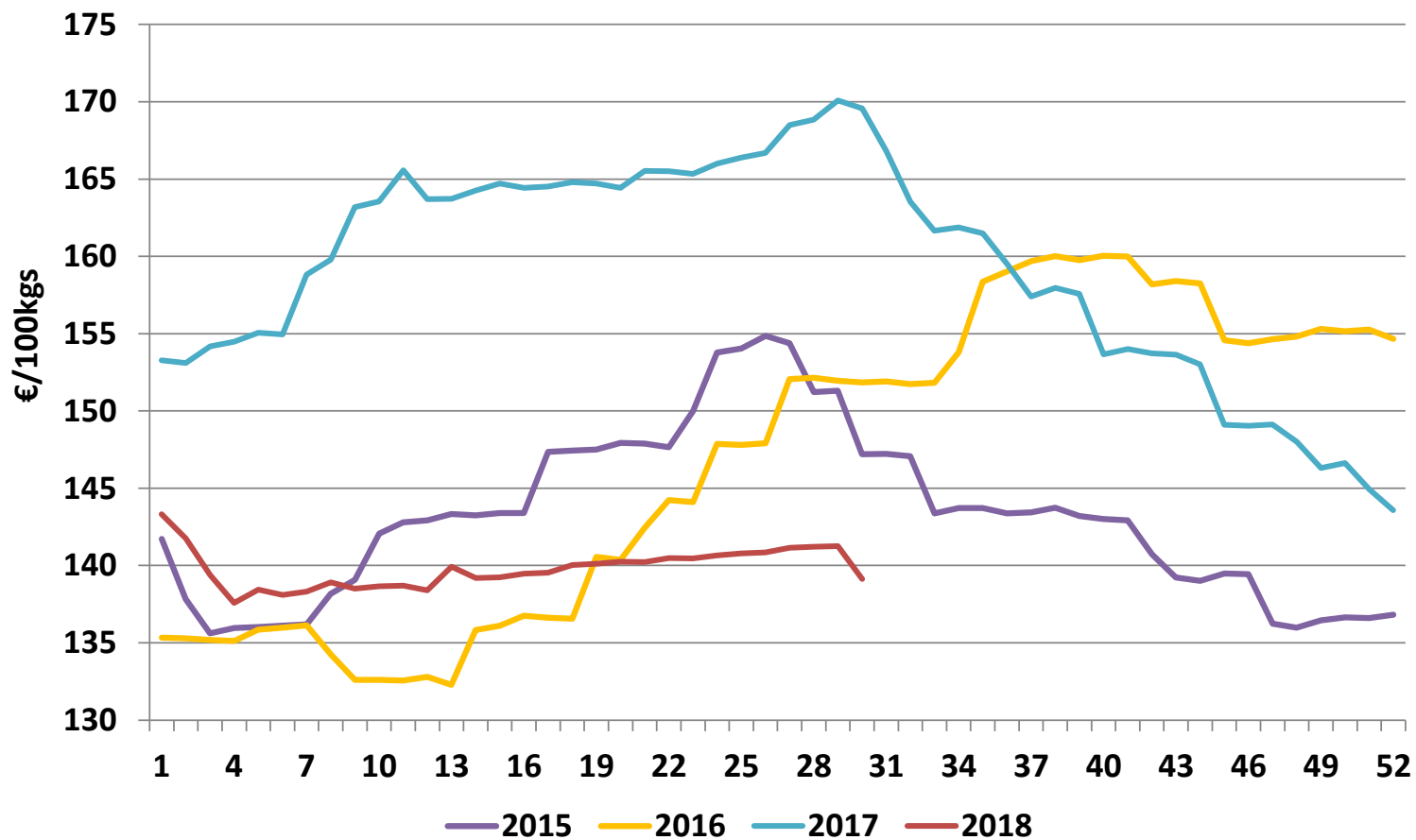


Cumulative cattle export figures, 2018

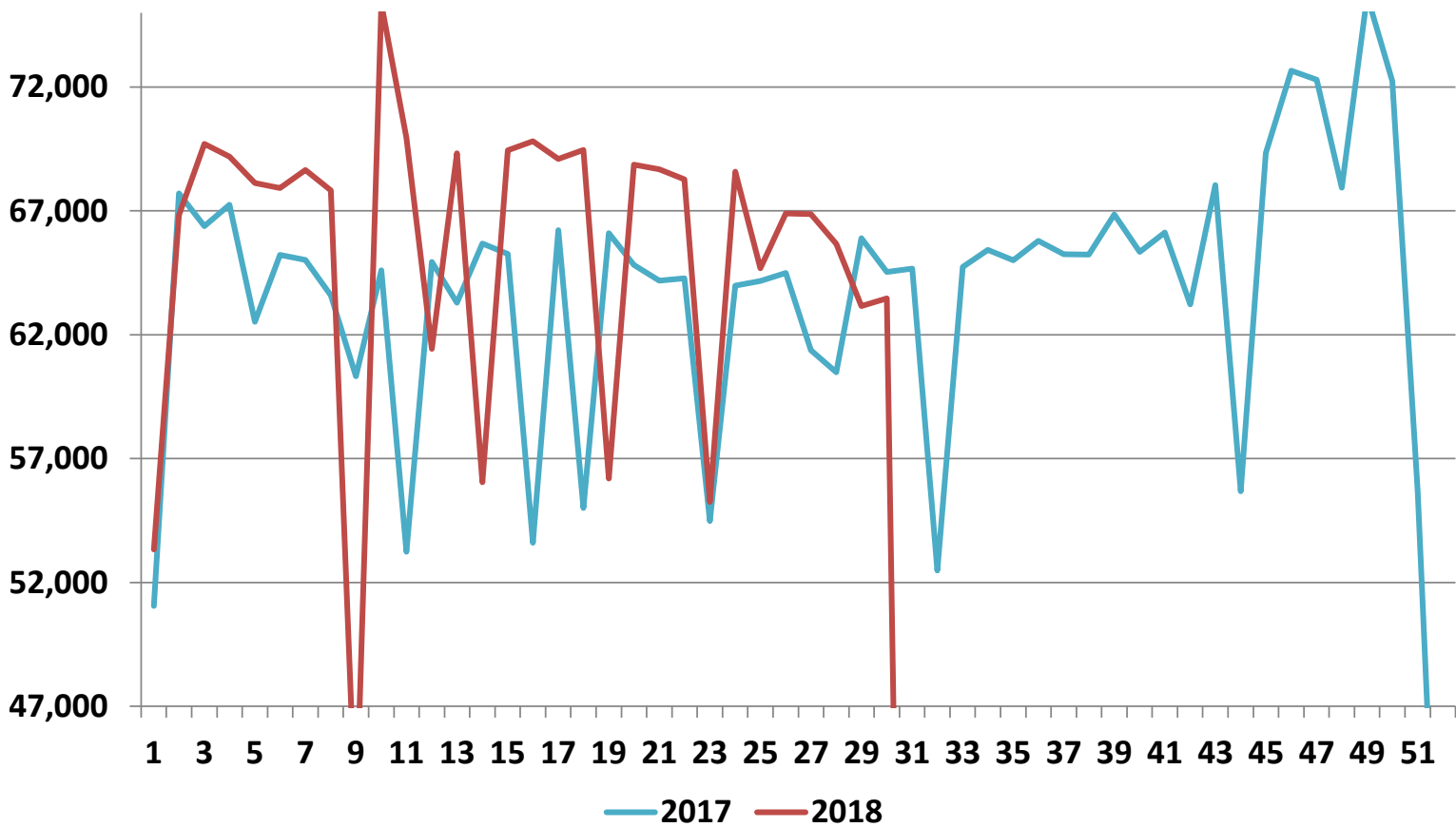


Irish Average Grade E Pig Prices - €/100kgs						
Week	2018	Weekly %	% change	2017	2016	2015
1	143.31		-6.5%	153.27	135.34	141.72
2	141.76	-1.1%	-7.4%	153.10	135.28	137.83
3	139.39	-1.7%	-9.6%	154.17	135.18	135.62
4	137.57	-1.3%	-10.9%	154.48	135.12	135.95
5	138.43	0.6%	-10.7%	155.06	135.84	136.01
6	138.10	-0.2%	-10.9%	154.96	135.98	136.10
7	138.30	0.1%	-12.9%	158.82	136.13	136.19
8	138.92	0.4%	-13.1%	159.79	134.25	138.17
9	138.51	-0.3%	-15.1%	163.19	132.61	139.08
10	138.66	0.1%	-15.2%	163.55	132.61	142.06
11	138.69	0.0%	-16.2%	165.58	132.55	142.79
12	138.40	-0.2%	-15.5%	163.71	132.79	142.93
13	139.93	1.1%	-14.5%	163.72	132.27	143.34
14	139.20	-0.5%	-15.3%	164.25	135.82	143.25
15	139.23	0.0%	-15.5%	164.71	136.11	143.40
16	139.47	0.2%	-15.2%	164.43	136.75	143.39
17	139.54	0.1%	-15.2%	164.52	136.62	147.34
18	140.02	0.3%	-15.0%	164.80	136.56	147.43
19	140.12	0.1%	-14.9%	164.71	140.56	147.49
20	140.25	0.1%	-14.7%	164.42	140.36	147.93
21	140.22	0.0%	-15.3%	165.52	142.42	147.89
22	140.48	0.2%	-15.1%	165.50	144.24	147.66
23	140.47	0.0%	-15.0%	165.33	144.11	150.00
24	140.66	0.1%	-15.3%	165.99	147.86	153.77
25	140.79	0.1%	-15.4%	166.39	147.80	154.04
26	140.84	0.0%	-15.5%	166.68	147.91	154.86
27	141.14	0.2%	-16.2%	168.50	152.06	154.38
28	141.21	0.0%	-16.4%	168.83	152.15	151.22
29	141.26	0.0%	-16.9%	170.09	151.95	151.30
30	139.12	-1.5%	-18.0%	169.56	151.85	147.19
31				166.84	151.90	147.23
32				163.53	151.74	147.08
33				161.65	151.82	143.37
34				161.88	153.80	143.71
35				161.49	158.35	143.71
36				159.53	159.03	143.37
37				157.41	159.69	143.44
38				157.97	160.01	143.73
39				157.57	159.75	143.21
40				153.65	160.04	143.00
41				154.00	159.99	142.93
42				153.73	158.19	140.72
43				153.64	158.39	139.23
44				153.01	158.26	139.01
45				149.10	154.57	139.48
46				149.04	154.38	139.43
47				149.13	154.63	136.23
48				148.01	154.82	135.97
49				146.30	155.30	136.45
50				146.62	155.16	136.64
51				144.94	155.26	136.60
52				143.57	154.66	136.82
53						135.67

Average Grade E Pig Price



Pig Slaughtering Figures



Pigmeat Industry Overview

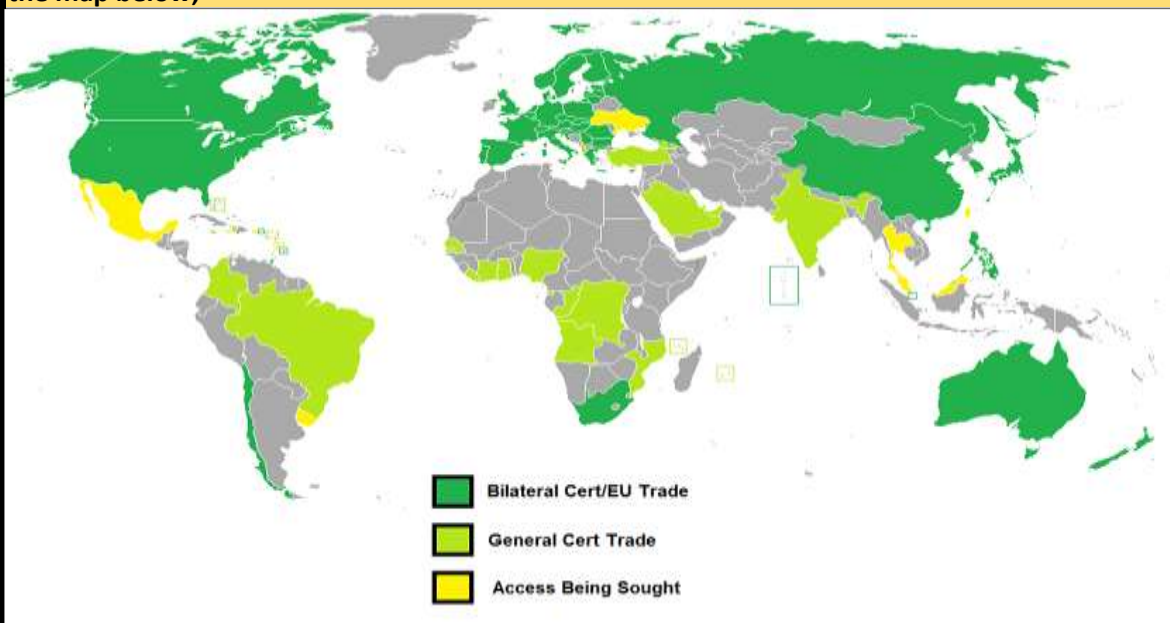
· CSO figures show that last year, Ireland exported 276,000 tonnes of pigmeat products (including prepared food) worth approximately €791m, comprising 6% of overall agri-food exports. This represents a rise of 8% in value terms when compared to 2016.

· Ireland's largest export market by far was the United Kingdom, accounting for approximately 56% of the total, followed by China, at 7%. Denmark, Germany and Japan were next, together comprising roughly 1.25% of export values.

· The Irish pig industry is characterised by large, indoor commercial farms with no 'bought in' animals. However, roughly 1,500 small scale farmers are registered with the Department of Agriculture, so a modest outdoor sector does exist.

· In 2017, 3.3m pigs were slaughtered in Irish export-approved plants, a rise of 1.2% compared to the previous year.

· Irish pigmeat exporters have access to a wide range of markets across the globe, as can be seen in the map below;



· EU production is predicted hold steady into 2019, exports to drop, imports rise and consumption to stay the same, according to the EU Commission's short-term outlook. The EU pig herd grew by 1.4% last year by head count. However, a decline in volume of 0.8% was observed. EU exports globally are projected to rise by 2.5% this year.

· EU Exports to China declined by 9% to 2.6m tonnes following the all-time highs of 2016, but still remained well above the 2015 levels. China accounted for 28% of EU exports last year, down 10% from 2016. The EU supplied 56% of China's pork imports last year.

· In April, China announced the imposition of 25% tariffs on US pork imports in retaliation for American tariffs on Chinese metals.

· According to OECD figures, the EU is the world's largest consumer of pigmeat at 32.5kg per capita, followed closely by China (30.8kg), Vietnam (29kg), South Korea (28.7kg) and the USA (23.6kg). In general terms, consumption is high in Europe, East Asia and the Americas, and low in the Islamic world and Africa.

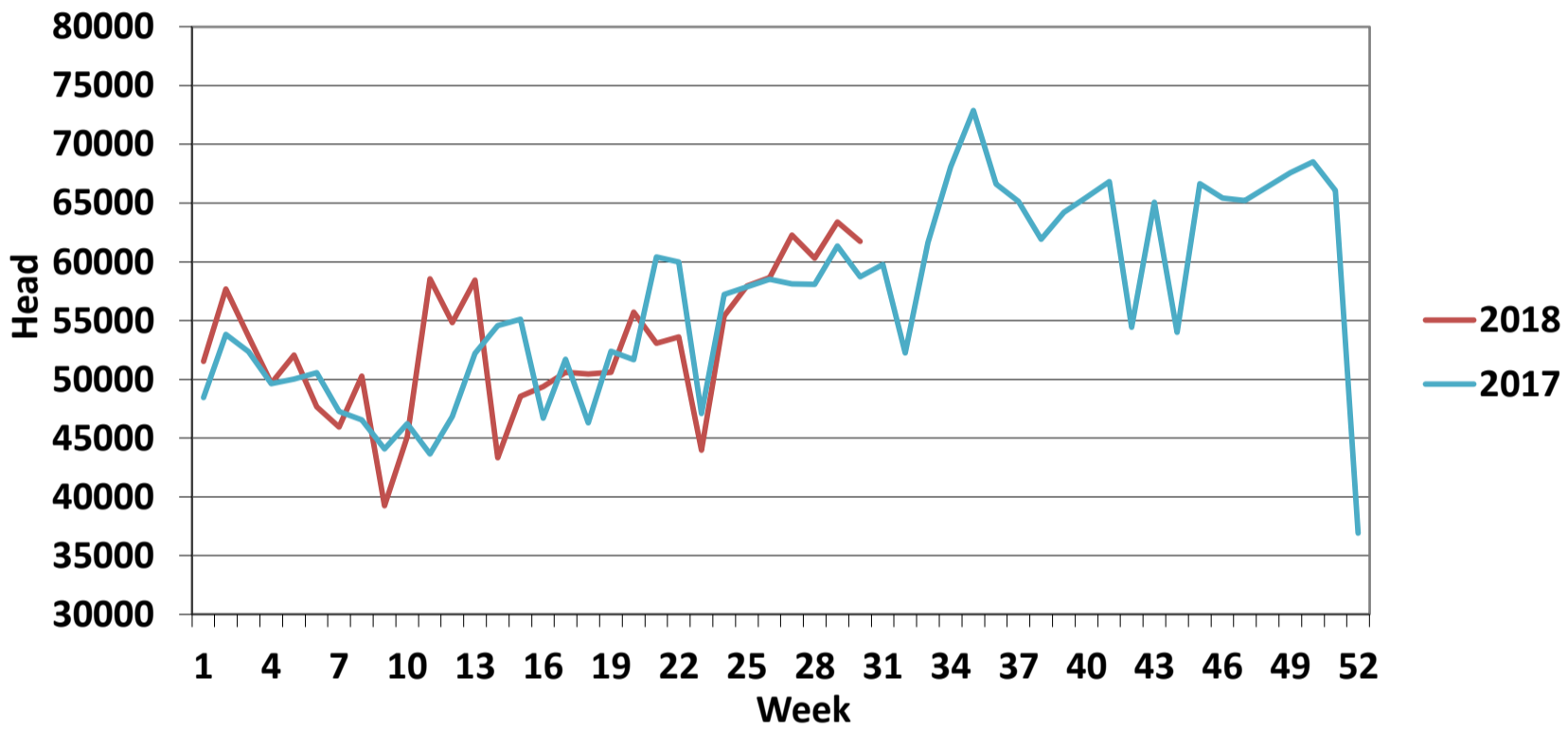
Pig Slaughtering Figures at Export Approved Plants

2018							2017				
Week	Pigs	Sows	Total	Cum	2018v2017	% Diff	Week	Pigs	Sows	Total	Cum
1	51,490	1,839	53,329	53,329	2,278	4%	1	49,383	1,668	51,051	51,051
2	64,796	2,031	66,827	120,156	1,397	1%	2	65,598	2,110	67,708	118,759
3	68,008	1,702	69,710	189,866	4,724	3%	3	64,274	2,109	66,383	185,142
4	67,302	1,883	69,185	259,051	6,667	3%	4	65,467	1,775	67,242	252,384
5	65,886	2,242	68,128	327,179	12,275	4%	5	60,873	1,647	62,520	314,904
6	66,072	1,852	67,924	395,103	14,969	4%	6	63,771	1,459	65,230	380,134
7	66,751	1,903	68,654	463,757	18,596	4%	7	63,289	1,738	65,027	445,161
8	65,920	1,905	67,825	531,582	22,825	4%	8	61,999	1,597	63,596	508,757
9	41,794	359	42,153	573,735	4,657	1%	9	58,513	1,808	60,321	569,078
10	72,970	2,385	75,355	649,090	15,415	2%	10	63,238	1,359	64,597	633,675
11	68,008	1,937	69,945	719,035	32,121	5%	11	51,558	1,681	53,239	686,914
12	59,506	1,925	61,431	780,466	28,610	4%	12	63,182	1,760	64,942	751,856
13	67,692	1,634	69,326	849,792	34,641	4%	13	61,444	1,851	63,295	815,151
14	54,379	1,673	56,052	905,844	25,012	3%	14	63,895	1,786	65,681	880,832
15	67,346	2,105	69,451	975,295	29,193	3%	15	63,474	1,796	65,270	946,102
16	67,791	2,022	69,813	1,045,108	45,396	5%	16	51,998	1,612	53,610	999,712
17	67,224	1,875	69,099	1,114,207	48,275	5%	17	63,977	2,243	66,220	1,065,932
18	67,453	2,011	69,464	1,183,671	62,728	6%	18	53,557	1,454	55,011	1,120,943
19	54,510	1,682	56,192	1,239,863	52,823	4%	19	64,247	1,850	66,097	1,187,040
20	67,150	1,723	68,873	1,308,736	56,882	5%	20	63,028	1,786	64,814	1,251,854
21	66,590	2,092	68,682	1,377,418	61,375	5%	21	62,150	2,039	64,189	1,316,043
22	66,404	1,871	68,275	1,445,693	65,366	5%	22	62,840	1,444	64,284	1,380,327
23	53,696	1,549	55,245	1,500,938	66,132	5%	23	52,834	1,645	54,479	1,434,806
24	66,779	1,807	68,586	1,569,524	70,738	5%	24	62,294	1,686	63,980	1,498,786
25	62,897	1,791	64,688	1,634,212	71,258	5%	25	62,455	1,713	64,168	1,562,954
26	65,378	1,521	66,899	1,701,111	73,662	5%	26	62,554	1,941	64,495	1,627,449
27	64,921	1,953	66,874	1,767,985	79,152	5%	27	59,582	1,802	61,384	1,688,833
28	63,997	1,678	65,675	1,833,660	84,336	5%	28	58,904	1,587	60,491	1,749,324
29	61,430	1,730	63,160	1,896,820	81,594	4%	29	64,112	1,790	65,902	1,815,226
30	62,022	1,441	63,463	1,960,283	80,518	4%	30	62,572	1,967	64,539	1,879,765
31							31	62,929	1,745	64,674	1,944,439
32							32	50,933	1,545	52,478	1,996,917
33							33	62,812	1,928	64,740	2,061,657
34							34	63,823	1,603	65,426	2,127,083
35							35	62,962	2,045	65,007	2,192,090
36							36	63,686	2,109	65,795	2,257,885
37							37	63,255	1,990	65,245	2,323,130
38							38	63,581	1,659	65,240	2,388,370
39							39	64,972	1,878	66,850	2,455,220
40							40	63,493	1,850	65,343	2,520,563
41							41	64,269	1,863	66,132	2,586,695
42							42	61,459	1,770	63,229	2,649,924
43							43	66,014	2,035	68,049	2,717,973
44							44	53,954	1,733	55,687	2,773,660
45							45	67,519	1,823	69,342	2,843,002
46							46	70,899	1,763	72,662	2,915,664
47							47	70,337	1,951	72,288	2,987,952
48							48	66,269	1,671	67,940	3,055,892
49							49	73,743	1,936	75,679	3,131,571
50							50	69,984	2,251	72,235	3,203,806
51							51	55,083	590	55,673	3,259,479
52							52	31,853	901	32,754	3,292,233
53							53				
Overall Total	1,906,162	54,121	1,960,283				Overall Total	3,200,891	91,342	3,292,233	

**REPORT ON SLAUGHTERING AT SHEEP EXPORT PREMISES
WEEK 30**

CATEGORY	2018		2017		DIFFERENCE		% Differences 2018 vs 2017	
	Weekly	Cumulative	Weekly	Cumulative	Weekly	Cumulative	Weekly	Cumulative
Lambs/Hoggets	355	827,510	269	805,637	86	21,873	32%	3%
Spring Lambs	48,332	490,192	47,917	544,965	415	- 54,773	1%	-10%
Ewes and Rams	13,066	265,794	10,443	216,245	2,623	49,549	25%	23%
Light Lambs	2	127	83	629	-81	- 502	-98%	-80%
TOTAL	61,755	1,583,623	58,712	1,567,476	3,043	16,147	5%	1%

Weekly Sheep Slaughtering

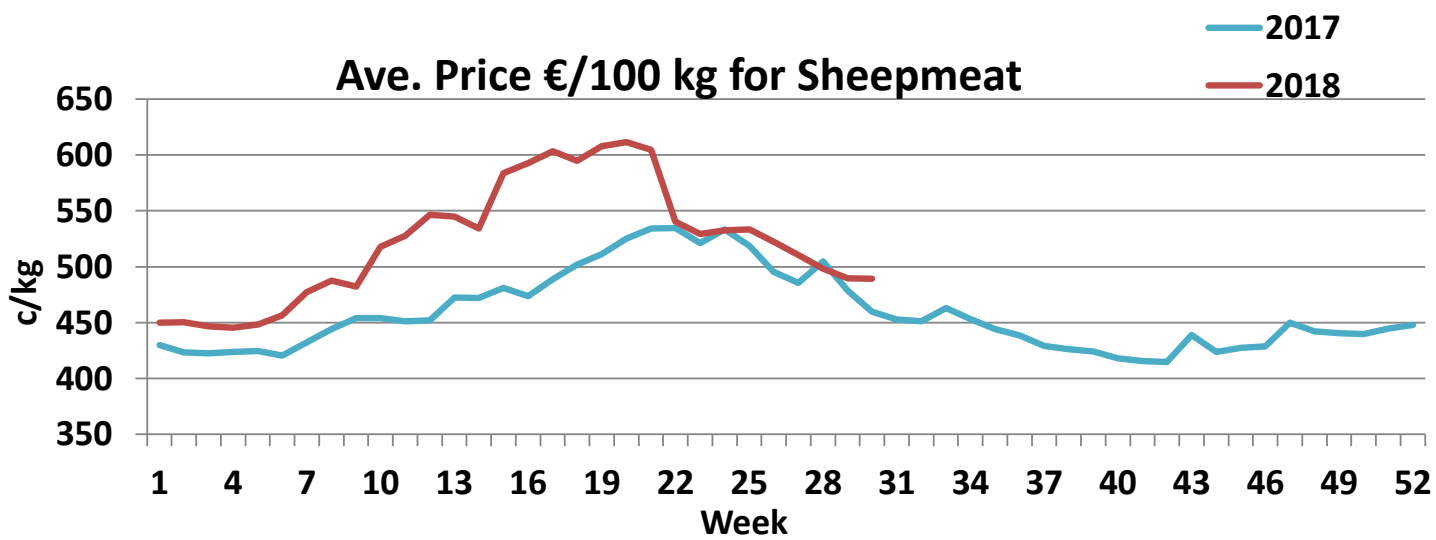


Sheepmeat Information for week 30

Irish Prices €/100 kg	2018	2017	Change
Ave Factory Price	532.33	486.15	9.5%
Ave Mart Price	388.62	398.75	-2.5%
National Ave Price	489.22	459.93	6.4%
YTD Ave	523.12	474.67	10.2%

Slaughterings	2018	2017	Change
Weekly	61,755	58,712	5%
YTD	1,583,623	1,567,476	1%

EU Market Rates Heavy Lambs	€/100kg	% of Community Price
Belgium	507.4	107%
Denmark	538.0	114%
Germany	578.9	123%
Spain	497.7	105%
France	630.0	133%
Hungary	589.9	125%
Ireland	489.2	104%
Italy	469.0	99%
Cyprus	447.0	95%
Latvia	383.0	81%
Lithuania	385.3	82%
Netherlands	588.4	125%
Austria	564.0	119%
Poland	426.4	90%
Romania	218.9	46%
Finland	384.5	81%
Sweden	489.4	104%
Northern Ireland	422.8	89%
Great Britain	469.0	99%
United Kingdom	465.7	99%
Community	472.5	100%



Comparison of Poultry Slaughter Figures Between 2018 and 2017						
WEEK	2018 weekly	2018 cumulative	2017 weekly	2017 cumulative	2017 v 2018	% difference
1	1,625,961	1,625,961	1,800,752	1,800,752	-174,791	-9.7%
2	1,969,356	3,595,317	1,855,926	3,656,678	-61,361	-1.7%
3	1,932,194	5,527,511	1,904,859	5,561,537	-34,026	-0.6%
4	1,886,770	7,414,281	1,885,286	7,446,823	-32,542	-0.4%
5	1,800,824	9,215,105	1,831,229	9,278,052	-62,947	-0.7%
6	1,813,024	11,028,129	1,777,430	11,055,482	-27,353	-0.2%
7	1,808,499	12,836,628	1,859,200	12,914,682	-78,054	-0.6%
8	1,922,060	14,758,688	1,808,065	14,722,747	35,941	0.2%
9	1,557,975	16,316,663	1,768,257	16,491,004	-174,341	-1.1%
10	2,159,284	18,475,947	1,842,204	18,333,208	142,739	0.8%
11	1,957,072	20,433,019	1,709,219	20,042,427	390,592	1.9%
12	1,734,665	22,126,409	1,868,499	21,910,926	215,483	1.0%
13	1,874,839	24,001,248	1,823,125	23,734,051	267,197	1.1%
14	1,755,145	25,756,393	1,766,109	25,500,160	256,233	1.0%
15	1,963,967	27,720,360	1,770,716	27,270,876	449,484	1.6%
16	2,008,587	29,728,947	1,654,606	28,925,482	803,465	2.8%
17	1,994,979	31,723,926	1,969,576	30,895,058	828,868	2.7%
18	1,944,920	33,668,846	1,717,922	32,612,980	1,055,866	3.2%
19	1,749,772	35,418,618	1,867,134	34,480,114	938,504	2.7%
20	2,007,305	37,425,923	1,841,906	36,322,020	1,103,903	3.0%
21	1,948,360	39,374,283	1,799,032	38,121,052	1,253,231	3.3%
22	1,965,217	41,339,500	1,831,652	39,952,704	1,386,796	3.5%
23	1,726,225	43,065,725	1,813,217	41,765,921	1,299,804	3.1%
24	1,881,726	44,988,726	1,880,162	43,646,083	1,342,643	3.1%
25	1,896,280	46,843,731	1,846,871	45,492,954	1,350,777	3.0%
26	1,934,425	48,786,157	1,821,416	47,314,370	1,471,787	3.1%
27	1,818,807	50,604,964	1,958,626	49,272,996	1,331,968	2.7%
28	1,929,607	52,567,845	1,959,125	51,232,121	1,335,724	2.6%
29						
30						
31						
32						
33						
34						
35						
36						
37						
38						
39						
40						
41						
42						
43						
44						
45						
46						
47						
48						
49						
50						
51						
52						