

# Meat Market Report

25/06/18 - 01/07/18

Week  
26



**An Roinn Talmhaíochta,  
Bia agus Mara**  
Department of Agriculture,  
Food and the Marine

# MARKET SUMMARY

## Beef

### Deadweight Prices c/100Kg (Including VAT)

|             | U3    | U4    | R3    | R4    | O3    | O4    | P+    |
|-------------|-------|-------|-------|-------|-------|-------|-------|
| Steers      | 434.4 | 430.1 | 423.1 | 423.7 | 407.3 | 408.8 | 384.7 |
| Heifers     | 453.7 | 455.0 | 437.6 | 436.4 | 418.2 | 418.1 | 383.1 |
| Young Bulls | 434.4 | 436.3 | 422.7 | 428.7 | 395.3 | 403.9 | 387.6 |
| Cows        |       |       | 370.2 | 369.7 | 348.0 | 348.9 | 336.4 |

### Liveweight Prices

|                                   |                                  |
|-----------------------------------|----------------------------------|
| *Bull Calf Average Price          | €192.0 per head (Excluding VAT)  |
| **Young Store Average Price       | €230.0 per 100kg (Excluding VAT) |
| ***Yearling (male & female) Price | €200.0 per 100kg (Excluding VAT) |

\* Aged 8-28 days \*\* Aged 180-364 days, Male & Female \*\*\*age 365-730 days

### Slaughtering

33,843 cattle slaughtered this week, of which steers were 11,127 (33%), heifers 8,865 (26%), young bulls 4,302 (13%) and cows 9,038 (27%). Total slaughter is 849,647 compared to 830,590 in 2017, an 2.3% increase.

### Live Trade

3,886 cattle were exported in the week commencing 25/06/2018\*;2825 to EU (Except NI). Live exports for 2018 amount to 176,775 compared to 135,017 in 2017, up 31% on 2017 levels.

\*This data is provisional and subject to revision.

The next meeting of the Management Committee for the Common Organisation of Agricultural Markets (Animal Products Sector) is 19 July 2018

### CONTENTS:

Page 2: Market Summary Beef  
 Page 3: Market Summary Other Meats  
 Page 4: Beef Price and Slaughter Summary  
 Page 5: Comparative Beef Prices  
 Page 6: Steer and Young Bull Price  
 Page 7: Heifer and Cow Graphs  
 Page 8: Price and Slaughter Graphs  
 Page 9: Liveweight Beef Graphs

Page 10: Beef Export Maps  
 Page 11: Beef Export Info  
 Page 12: Market Access Update  
 Page 13: Pig Price Graph  
 Page 14: Pig Slaughtering  
 Page 15: Sheep Prices  
 Page 16: Sheep Slaughtering  
 Page 17: Poultry Slaughtering

# MARKET SUMMARY

## Pigmeat

Grade E Pig  
Prices (Ex.  
VAT)

The Grade E Pig price for week commencing 25/06/2018 was €140.84 per 100Kg. This compares to €166.68 in the same week last year, a 15.5% decrease.

[Further details available on page 13](#)

Slaughtering

66,899 pigs were slaughtered in week 26 of which 1,521 were sows. The cumulative figure for pig slaughterings in 2018 is 1,701,111 which is up 5% against the same point last year.

[Further details available on page 14](#)

## Sheepmeat

Sheepmeat  
Prices (Ex.  
VAT)

The national average price for the week commencing 25/06/2018 was €522.44 per 100Kg, an increase of 5.5% over the same week last year.

[Further details available on page 15](#)

Slaughtering

58,649 sheep were slaughtered at sheep export premises the week commencing 25/06/2018, compared to 58,511 in the same week of 2017. Sheep slaughterings for 2018 are the same as 2017 at 1,335,896 head.

[Further details available on page 16](#)

Live Trade

Total live exports stand at 35,356 head up to the end of 2017.

## Poultry

Slaughtering

Cumulative poultry slaughterings for 2018\* stand at 48,786,157 birds at the end of week 26, up 3.1% compared to the same period last year.

[Further details available on page 17](#)

\*Latest Figures are provisional and subject to change

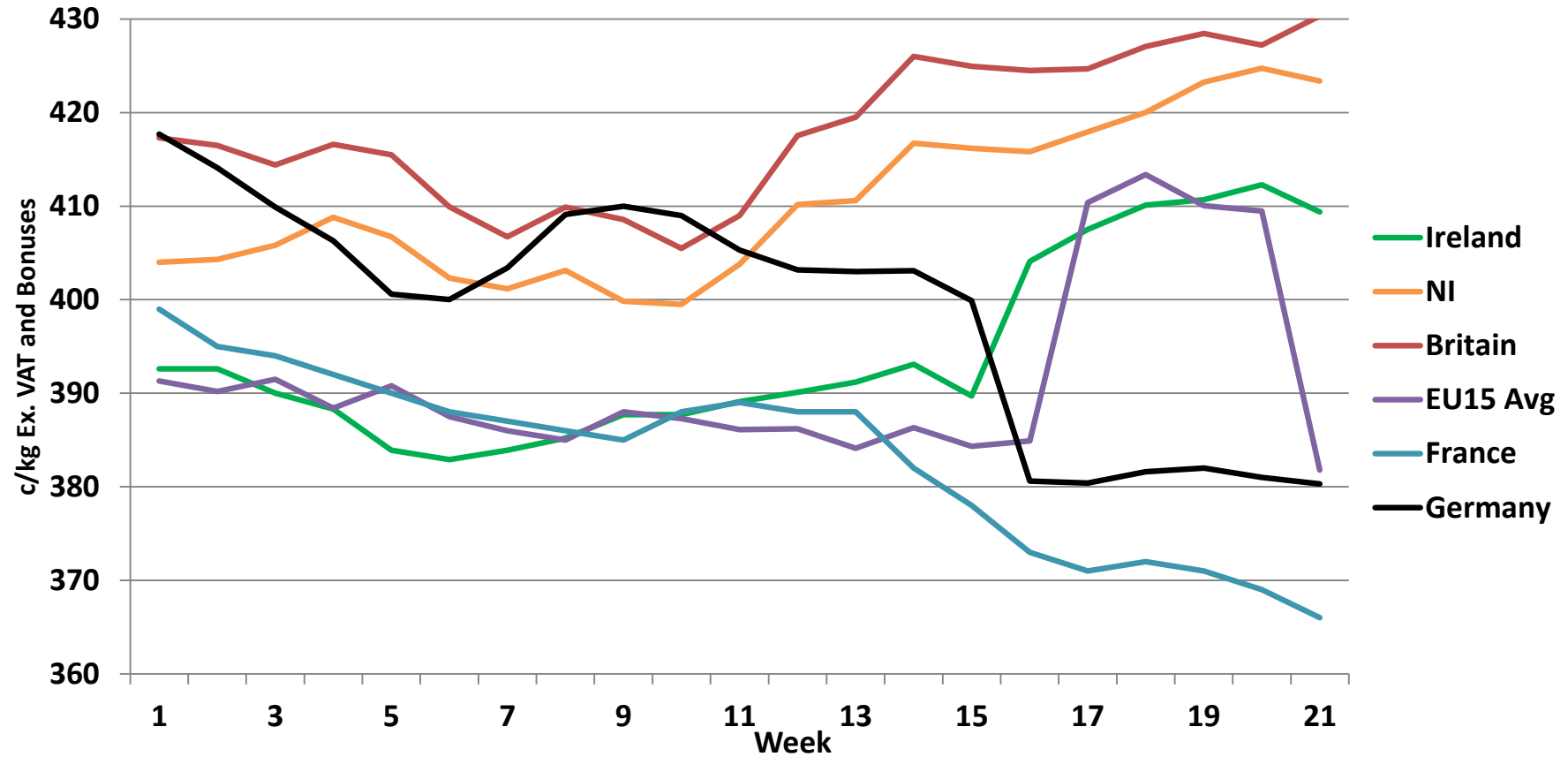
| Dead Weight Prices      | W/C      | W/C      | Same week<br>2017 | %<br>change<br>prev<br>week | %<br>change<br>2017 |
|-------------------------|----------|----------|-------------------|-----------------------------|---------------------|
|                         | 25/06/18 | 18/06/18 | 26/06/17          |                             |                     |
| Steers (R3) (c/kg)      | 401.4    | 406.8    | 398.2             | -1.3%                       | 0.8%                |
| Heifers (R3) (c/kg)     | 415.2    | 419.3    | 409.2             | -1.0%                       | 1.5%                |
| Young Bulls (U3) (c/kg) | 412.1    | 414.7    | 406.8             | -0.6%                       | 1.3%                |
| Cows (04) (c/kg)        | 331.0    | 336.2    | 319.2             | -1.5%                       | 3.7%                |

| Live Weight Prices   | W/C      | W/C      | Same week<br>2017 | %<br>change<br>previous<br>week | %<br>change<br>2017 |
|--|----------|----------|-------------------|---------------------------------|---------------------|
|  | 25/06/18 | 18/06/18 | 26/06/17          |                                 |                     |
| Yearlings (Male) (Aged 365 - 730 days) - (€/100Kg)             | 195      | 198      | 199               | -1.5%                           | -2.0%               |
| Yearlings (Female) (Aged 365 - 730 days) - (€/100Kg)           | 205      | 208      | 212               | -1.4%                           | -3.3%               |
| Young Stores (Male & Female) (Aged 180 - 364 days) - (€/100Kg) | 230      | 237      | 237               | -3.0%                           | -3.0%               |
| Bull Calf (€/head) Dairy                                       | 163.7    | 168.5    | 167.4             | -2.8%                           | -2.2%               |
| Bull Calf (€/head) Beef  | 220.3    | 228.3    | 232.5             | -3.5%                           | -5.2%               |
| Bull Calf (€/head) Average                                     | 192.0    | 198.4    | 200.0             | -3.2%                           | -4.0%               |

| Slaughter Figures | % of weekly figures | W/C       | Same week<br>2017 | Year to Date |         | Change 2018 v 2017 |       |
|-------------------|---------------------|-----------|-------------------|--------------|---------|--------------------|-------|
|                   |                     | 25-Jun-18 |                   | 2018         | 2017    | Head               | %     |
| Steers            | 32.9%               | 11,127    | 12,571            | 291,927      | 292,757 | -830               | -0.3% |
| Cows              | 26.7%               | 9,038     | 7,559             | 186,250      | 183,667 | 2,583              | 1.4%  |
| Heifers           | 26.2%               | 8,865     | 9,078             | 241,056      | 231,385 | 9,671              | 4.2%  |
| Young Bulls       | 12.7%               | 4,302     | 3,776             | 114,581      | 109,008 | 5,573              | 5.1%  |
| Mature Bulls      | 1.5%                | 511       | 631               | 15,833       | 13,773  | 2,060              | 15.0% |
| Total             | 100%                | 33,843    | 33,615            | 849,647      | 830,590 | 19,057             | 2.3%  |

| Live Exports     | W/C       | Same week 2017 | W/C               | Year to Date |         | Change 2018 v 2017 |      |
|------------------|-----------|----------------|-------------------|--------------|---------|--------------------|------|
|                  | 25-Jun-18 |                | 18-Jun-18         | 2018         | 2017    | Head               | %    |
| Northern Ireland | 162       | 293            | 338               | 9,057        | 14,126  | -5,069             | -36% |
| EU Except NI     | 2,825     | 1,539          | 2,967             | 157,735      | 111,201 | 46,534             | 42%  |
| Third Countries  | 899       | 0              | 0                 | 9,983        | 9,690   | 293                | -    |
| Total            | 3,886     | 1,832          | 3,305             | 176,775      | 135,017 | 41,758             | 31%  |
| Calves YTD:      |           | 145,550        | Adult Cattle YTD: |              | 31,225  |                    |      |

## Irish Deadweight Cattle Prices vs Selected Other Markets, 2018

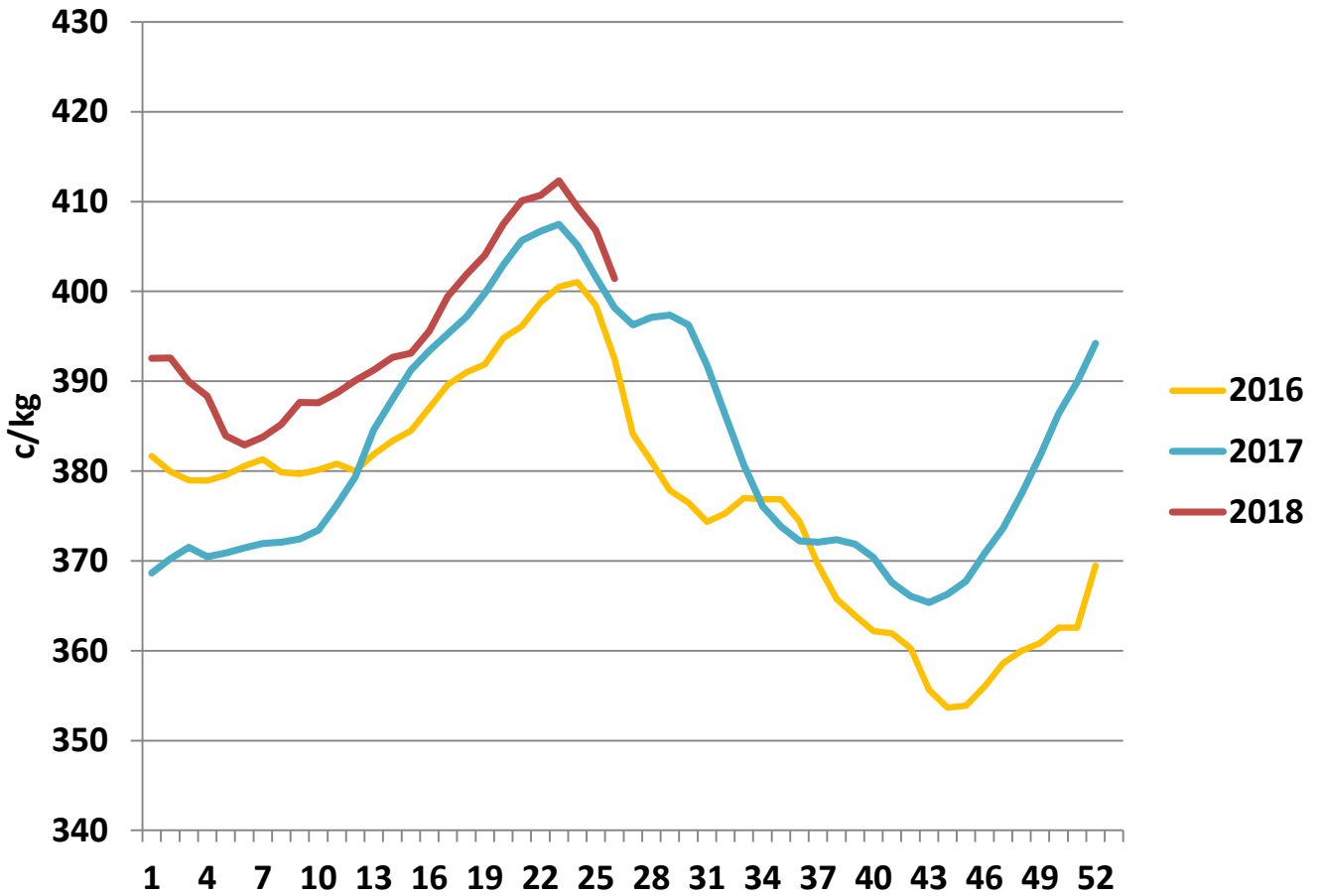


### Livestock Pricing

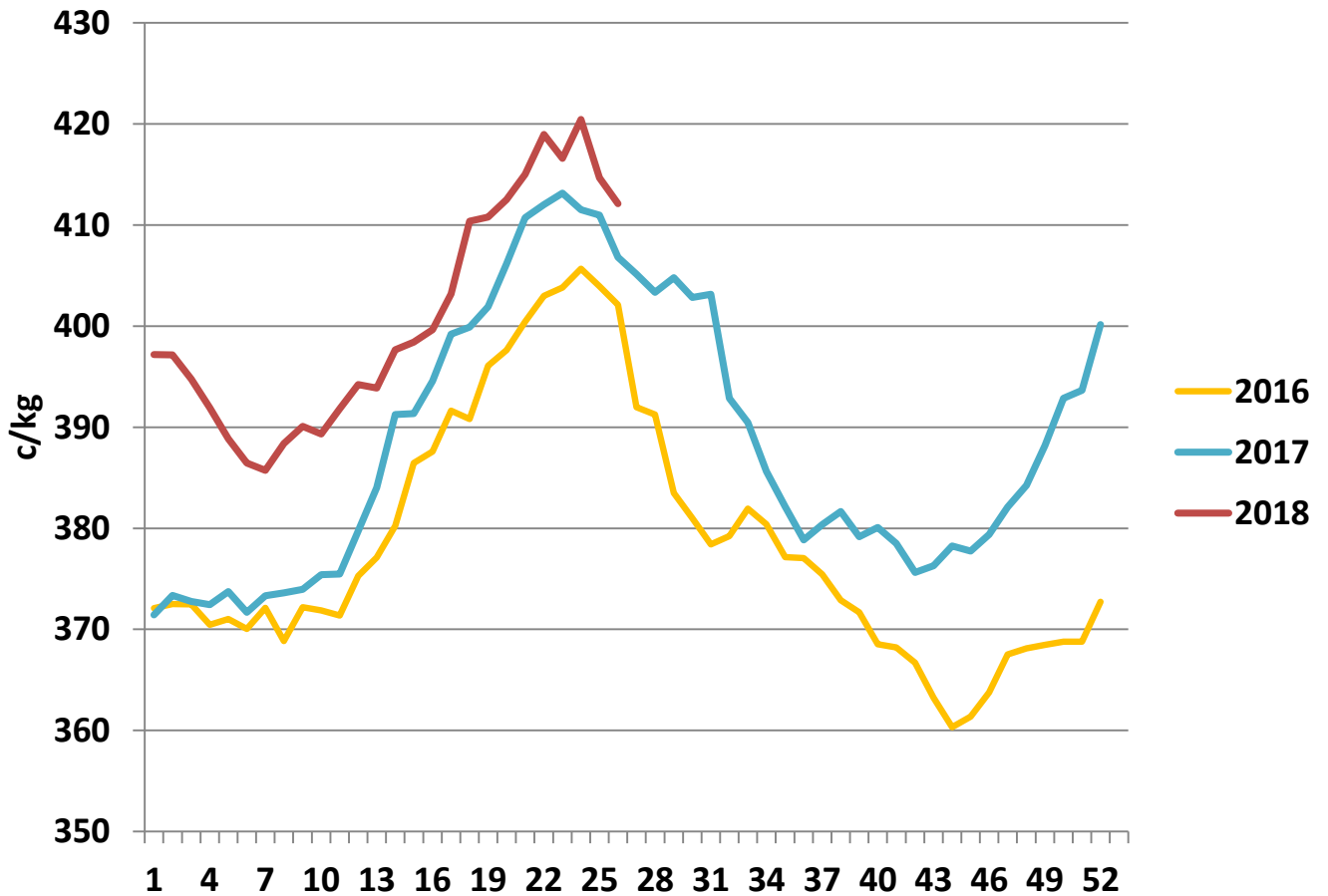
|                 | Ireland | NI     | Britain | EU 15 Average | France | Germany |
|-----------------|---------|--------|---------|---------------|--------|---------|
| <b>W/C</b>      |         |        |         |               |        |         |
| <b>18/06/18</b> | 409.4   | 423.38 | 430.34  | 409.95        | 366    | 379.7   |

All prices ex. VAT and bonuses. Prices are c/kg most recent available for R3 Steers for Ireland, NI & GB, R3 Young Bulls for EU, France & Germany.

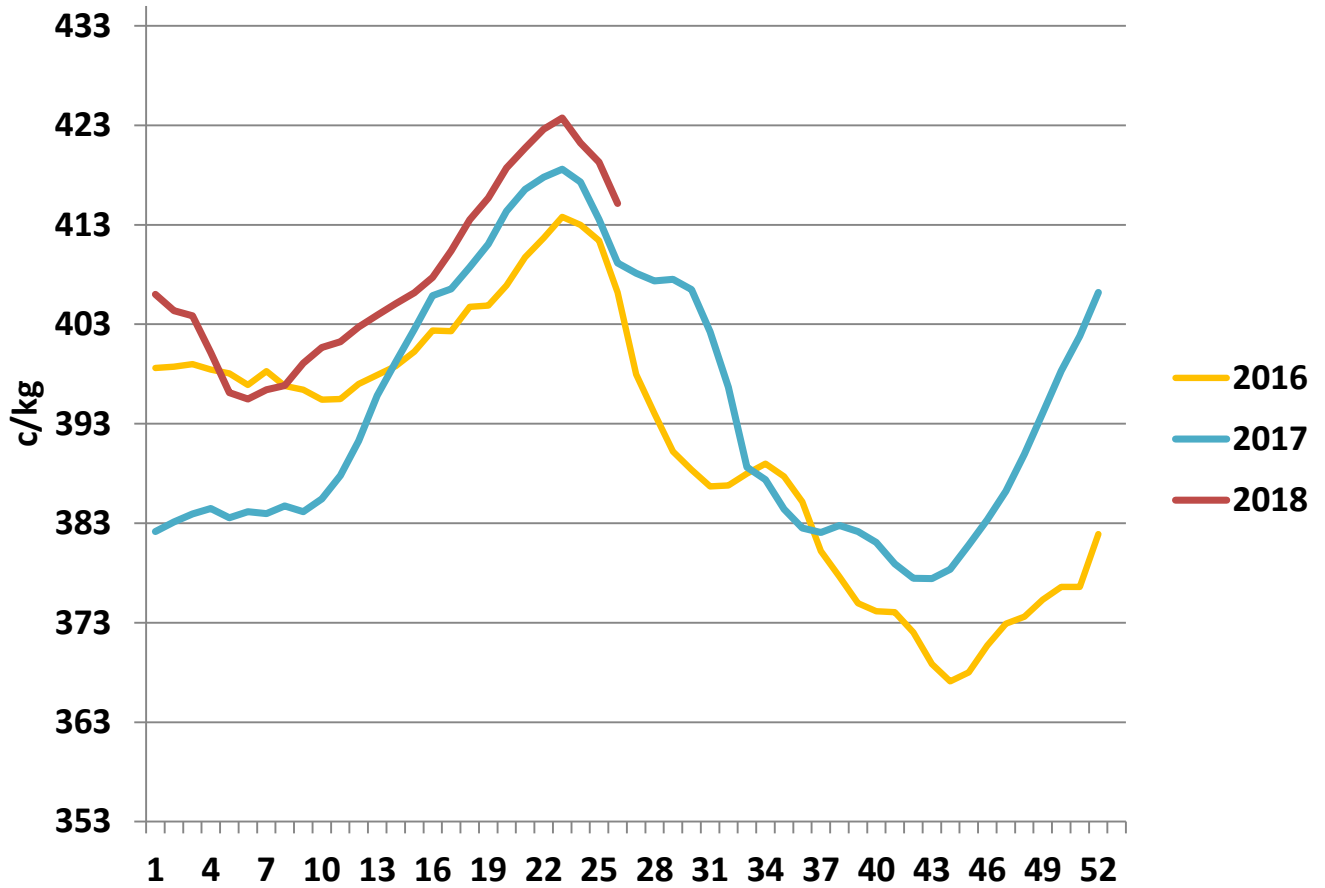
### R3 Steer prices ex. VAT



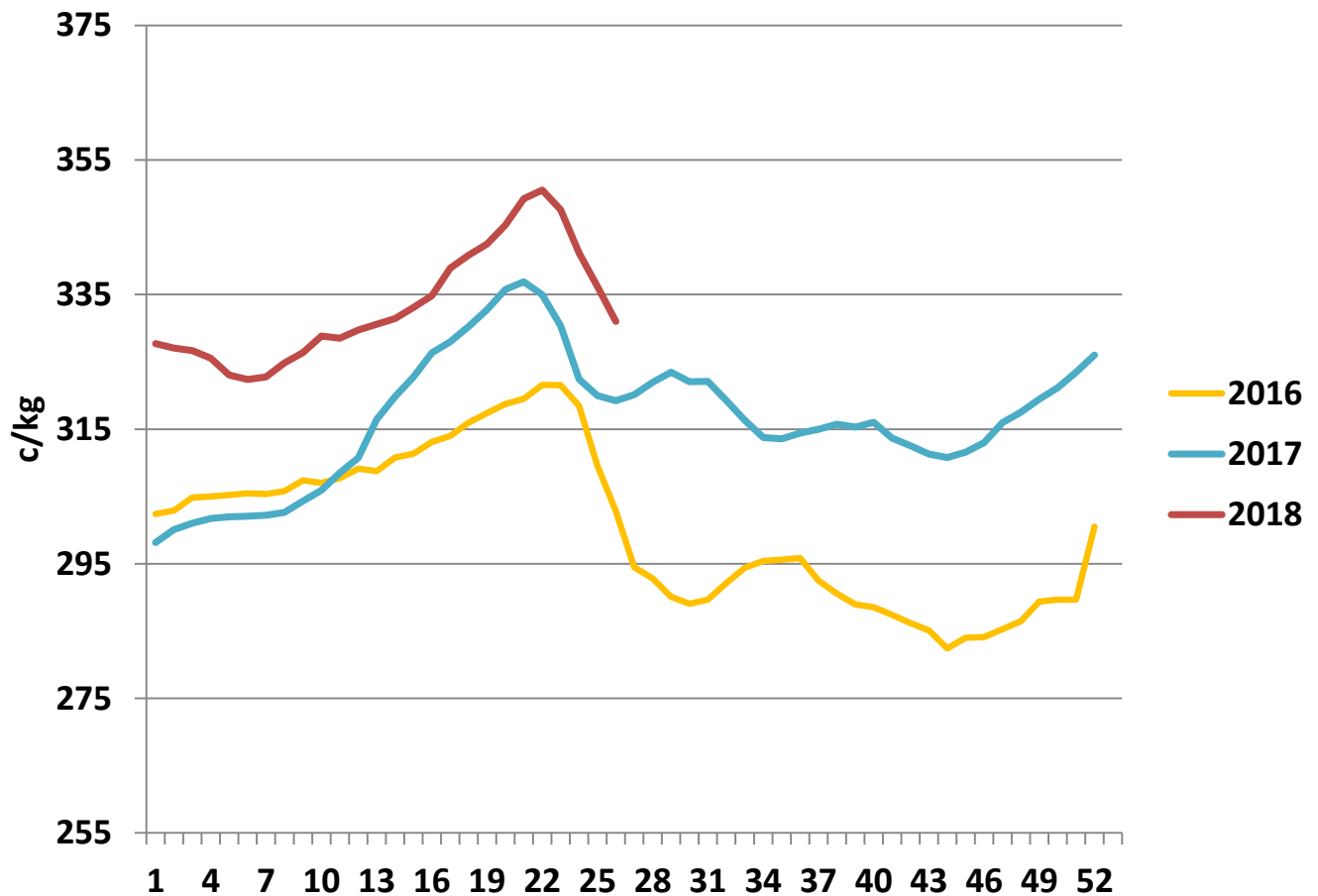
### U3 Young Bull prices ex. VAT

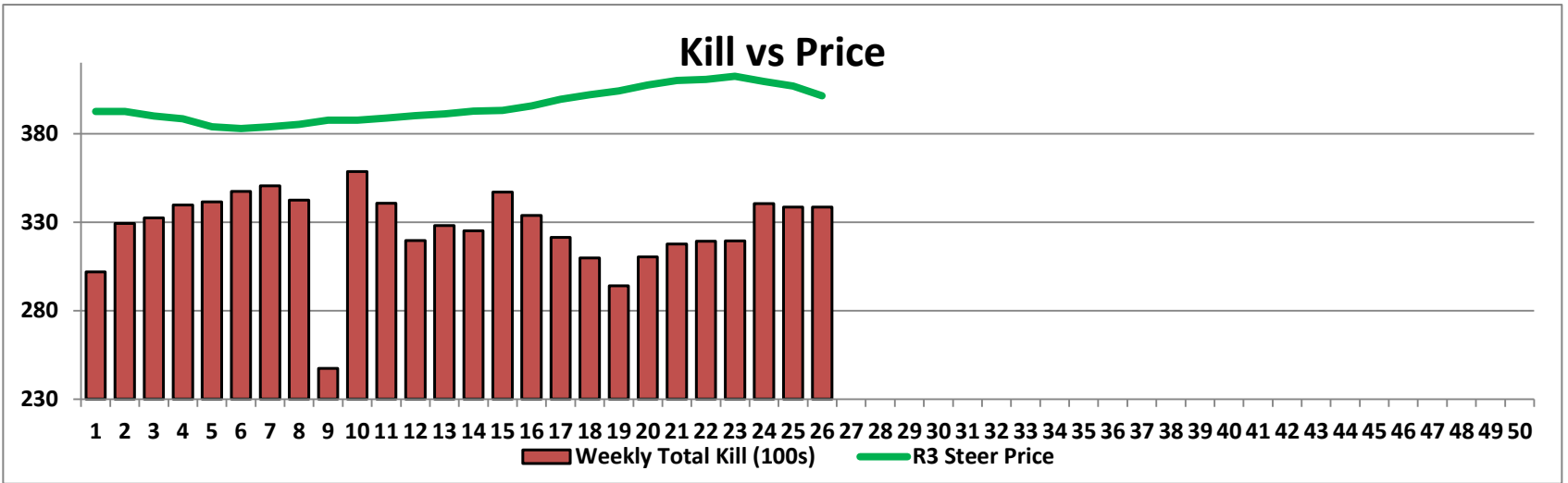
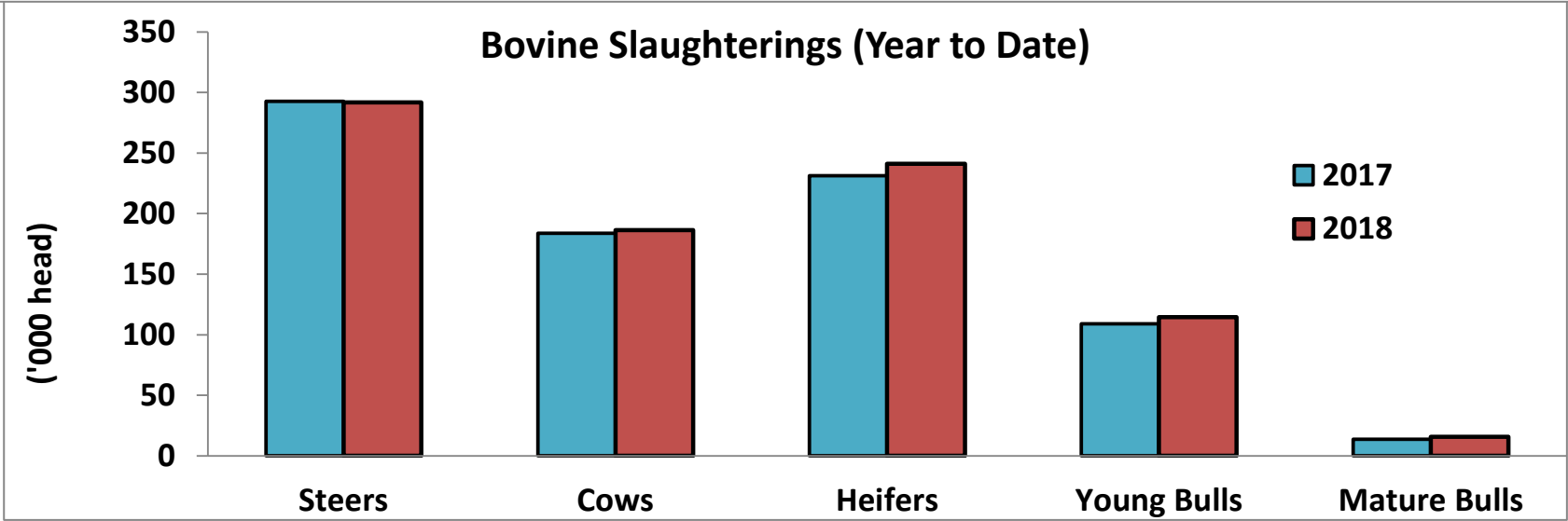
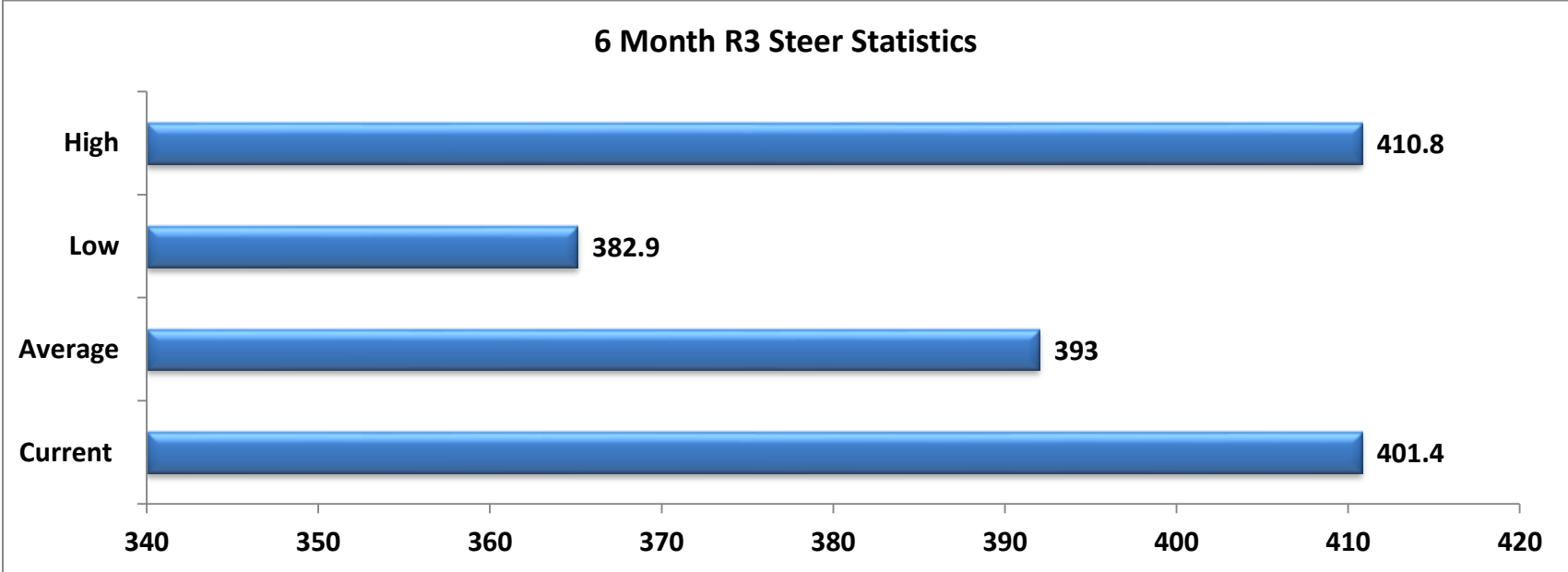


### R3 Heifer prices ex. VAT



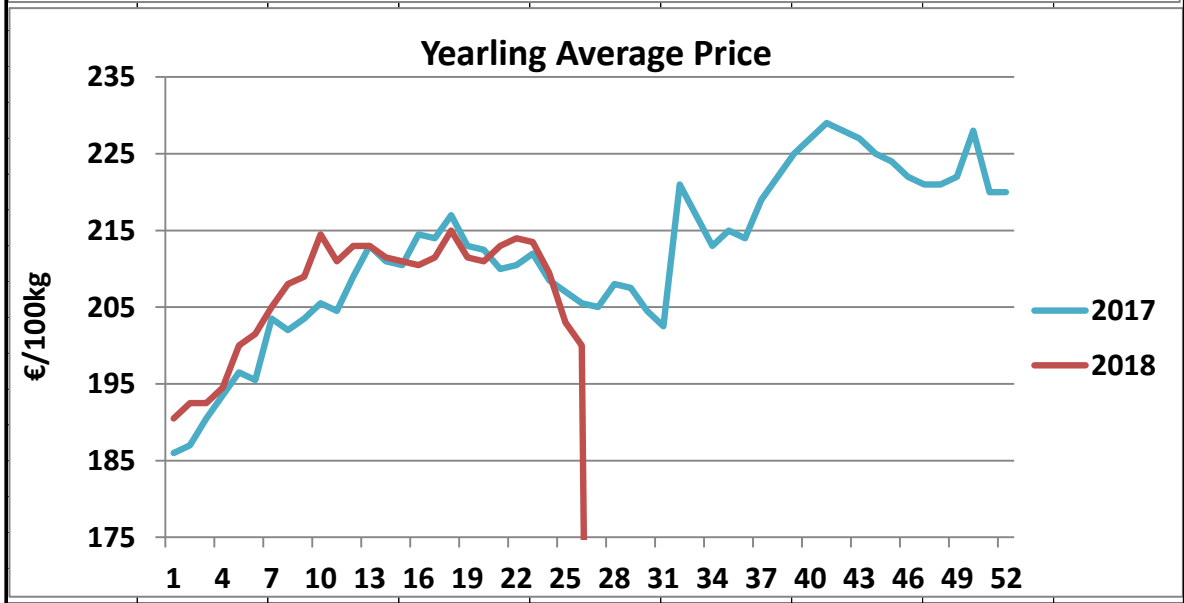
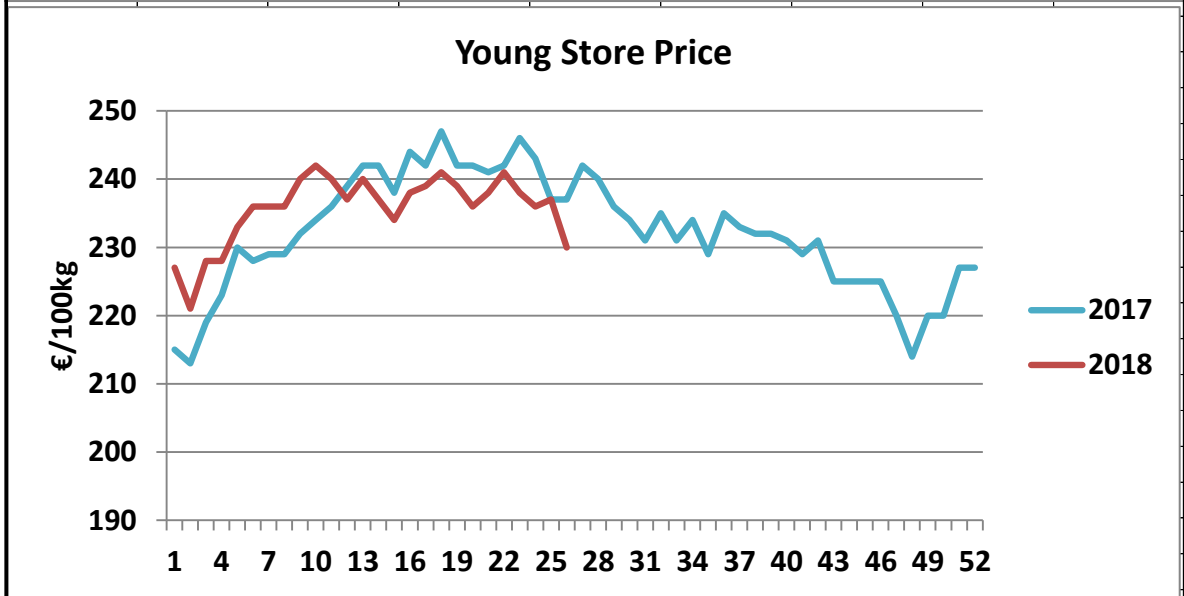
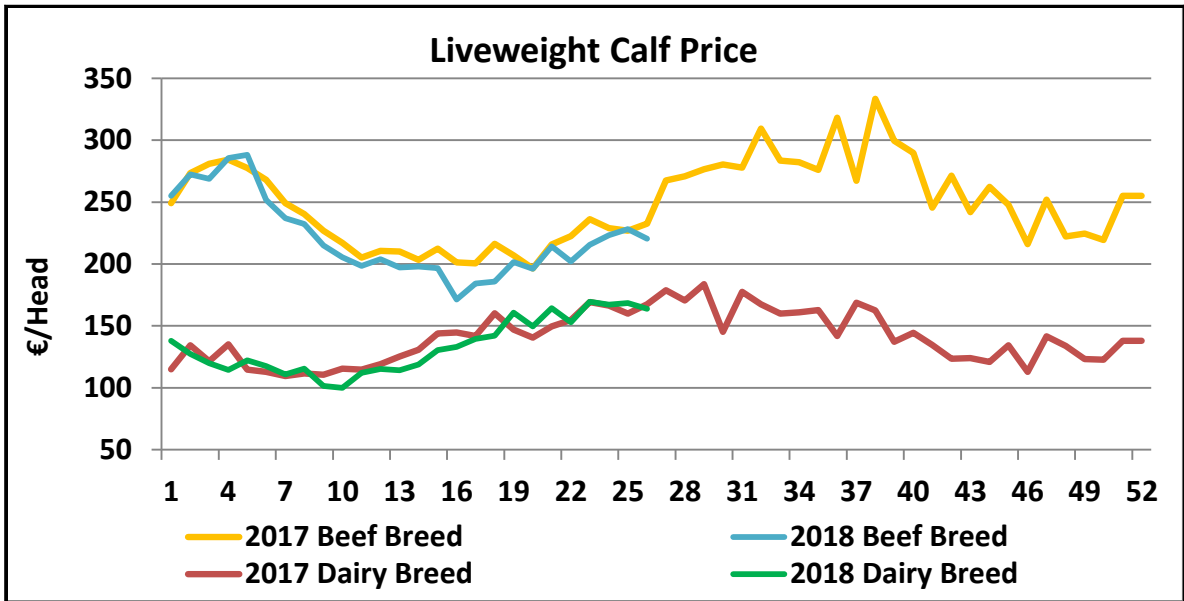
### O4 Cow prices ex. VAT







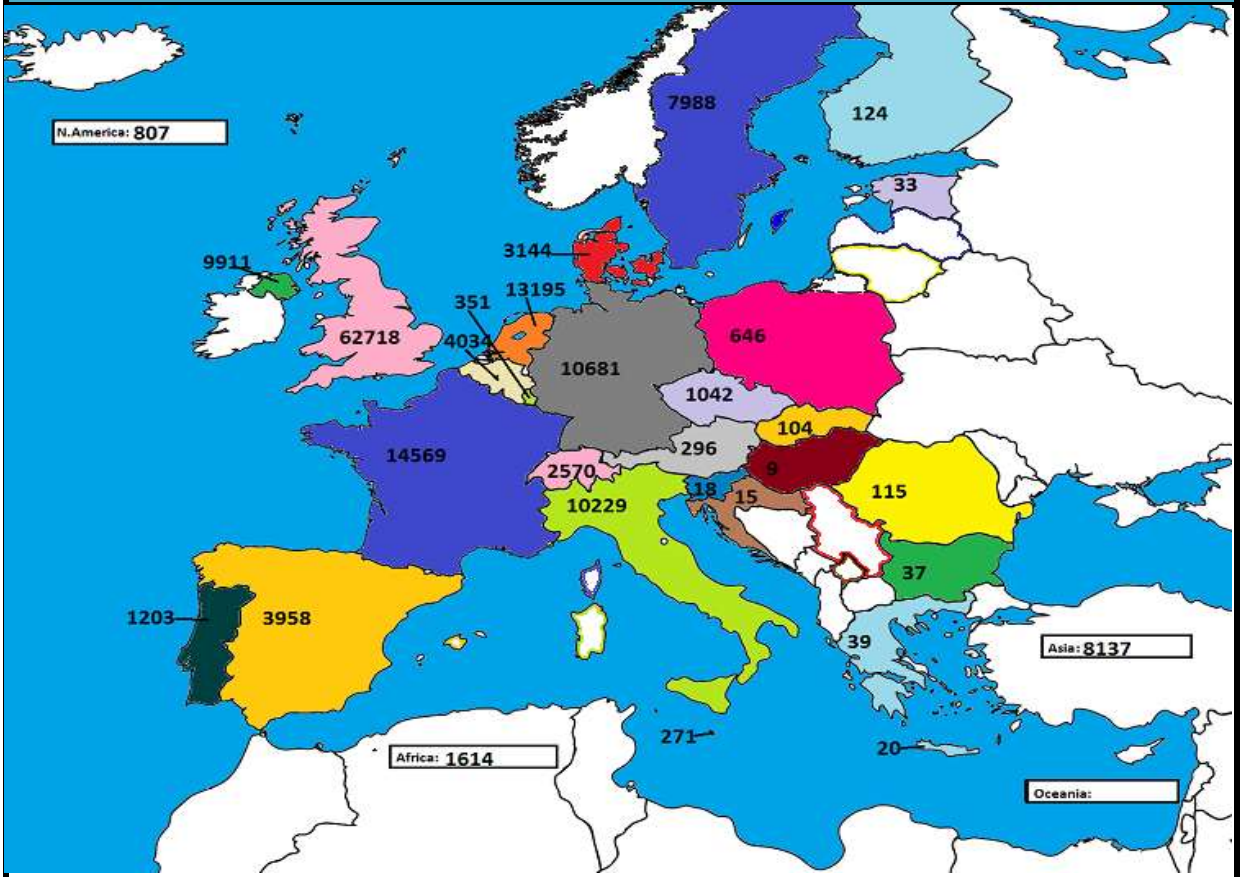
| EU LIVE CATTLE REPORT |            |         |            |         |                  |         |                 |        |                |        |               |        |             |             |
|-----------------------|------------|---------|------------|---------|------------------|---------|-----------------|--------|----------------|--------|---------------|--------|-------------|-------------|
| Week                  | Yearling M |         | Yearling F |         | Yearling Average |         | Bull Calf Dairy |        | Bull Calf Beef |        | Bull Calf Avg |        | Young Store | Young Store |
|                       | 2018       | 2017    | 2018       | 2017    | 2018             | 2017    | 2018            | 2017   | 2018           | 2017   | 2018          | 2017   | 2018        | 2017        |
|                       | €/100kg    | €/100kg | €/100kg    | €/100kg | €/100kg          | €/100kg | €/head          | €/head | €/head         | €/head | €/head        | €/head | €/100kg     | €/100kg     |
| 1                     | 186.0      | 181.0   | 195.0      | 191.0   | 190.5            | 186.0   | 138.0           | 115.0  | 255.0          | 249.1  | 196.5         | 182.0  | 227         | 215         |
| 2                     | 187.0      | 180.0   | 198.0      | 194.0   | 192.5            | 187.0   | 127.3           | 134.3  | 272.4          | 273.4  | 199.9         | 203.8  | 221         | 213         |
| 3                     | 189.0      | 187.0   | 196.0      | 194.0   | 192.5            | 190.5   | 119.8           | 121.4  | 268.7          | 280.8  | 194.2         | 201.1  | 228         | 219         |
| 4                     | 191.0      | 190.0   | 198.0      | 197.0   | 194.5            | 193.5   | 114.4           | 135.0  | 285.7          | 284.2  | 200.1         | 209.6  | 228         | 223         |
| 5                     | 195.0      | 190.0   | 205.0      | 203.0   | 200.0            | 196.5   | 122.1           | 114.8  | 288.3          | 277.6  | 205.2         | 196.2  | 233         | 230         |
| 6                     | 199.0      | 191.0   | 204.0      | 200.0   | 201.5            | 195.5   | 117.5           | 112.8  | 251.8          | 267.9  | 184.7         | 190.4  | 236         | 228         |
| 7                     | 205.0      | 194.0   | 205.0      | 213.0   | 205.0            | 203.5   | 110.7           | 109.5  | 237.0          | 249.1  | 173.9         | 179.3  | 236         | 229         |
| 8                     | 207.0      | 199.0   | 209.0      | 205.0   | 208.0            | 202.0   | 115.6           | 111.5  | 232.3          | 240.4  | 173.9         | 175.9  | 236         | 229         |
| 9                     | 204.0      | 195.0   | 214.0      | 212.0   | 209.0            | 203.5   | 101.4           | 110.6  | 215.1          | 227.0  | 158.3         | 168.8  | 240         | 232         |
| 10                    | 213.0      | 200.0   | 216.0      | 211.0   | 214.5            | 205.5   | 99.9            | 115.5  | 205.5          | 217.1  | 152.7         | 166.3  | 242         | 234         |
| 11                    | 209.0      | 199.0   | 213.0      | 210.0   | 211.0            | 204.5   | 112.0           | 114.5  | 198.5          | 205.2  | 155.3         | 159.9  | 240         | 236         |
| 12                    | 212.0      | 205.0   | 214.0      | 213.0   | 213.0            | 209.0   | 115.1           | 119.2  | 203.8          | 210.6  | 159.4         | 164.9  | 237         | 239         |
| 13                    | 212.0      | 208.0   | 214.0      | 218.0   | 213.0            | 213.0   | 114.3           | 125.2  | 197.2          | 210.1  | 155.7         | 167.7  | 240         | 242         |
| 14                    | 210.0      | 207.0   | 213.0      | 215.0   | 211.5            | 211.0   | 118.9           | 130.7  | 197.9          | 203.3  | 158.4         | 167.0  | 237         | 242         |
| 15                    | 209.0      | 206.0   | 213.0      | 215.0   | 211.0            | 210.5   | 130.3           | 143.9  | 196.7          | 212.6  | 163.5         | 178.2  | 234         | 238         |
| 16                    | 208.0      | 210.0   | 213.0      | 219.0   | 210.5            | 214.5   | 133.0           | 144.6  | 171.4          | 201.4  | 152.2         | 173.0  | 238         | 244         |
| 17                    | 209.0      | 211.0   | 214.0      | 217.0   | 211.5            | 214.0   | 139.5           | 141.8  | 184.2          | 200.6  | 161.8         | 171.2  | 239         | 242         |
| 18                    | 213.0      | 212.0   | 217.0      | 222.0   | 215.0            | 217.0   | 142.0           | 160.1  | 185.9          | 216.2  | 163.9         | 188.2  | 241         | 247         |
| 19                    | 208.0      | 207.0   | 215.0      | 219.0   | 211.5            | 213.0   | 160.7           | 147.0  | 201.4          | 207.1  | 181.0         | 177.0  | 239         | 242         |
| 20                    | 209.0      | 206.0   | 213.0      | 219.0   | 211.0            | 212.5   | 149.7           | 140.6  | 196.2          | 196.4  | 172.9         | 168.5  | 236         | 242         |
| 21                    | 210.0      | 204.0   | 216.0      | 216.0   | 213.0            | 210.0   | 164.4           | 149.6  | 214.2          | 215.7  | 189.3         | 182.7  | 238         | 241         |
| 22                    | 212.0      | 203.0   | 216.0      | 218.0   | 214.0            | 210.5   | 153.1           | 154.8  | 202.0          | 222.4  | 177.5         | 188.6  | 241         | 242         |
| 23                    | 211.0      | 205.0   | 216.0      | 219.0   | 213.5            | 212.0   | 169.4           | 169.3  | 215.7          | 236.2  | 192.5         | 202.7  | 238         | 246         |
| 24                    | 206.0      | 203.0   | 213.0      | 214.0   | 209.5            | 208.5   | 167.2           | 166.5  | 223.2          | 229.1  | 195.2         | 197.8  | 236         | 243         |
| 25                    | 198.0      | 200.0   | 208.0      | 214.0   | 203.0            | 207.0   | 168.5           | 159.8  | 228.3          | 226.8  | 198.4         | 193.3  | 237         | 237         |
| 26                    | 195.0      | 199.0   | 205.0      | 212.0   | 200.0            | 205.5   | 163.7           | 167.4  | 220.3          | 232.5  | 192.0         | 200.0  | 230         | 237         |
| 27                    |            | 197.0   |            | 213.0   | -                | 205.0   |                 | 178.9  |                | 267.6  | -             | 223.2  |             | 242         |
| 28                    |            | 201.0   |            | 215.0   | -                | 208.0   |                 | 170.5  |                | 270.8  | -             | 220.6  |             | 240         |
| 29                    |            | 202.0   |            | 213.0   | -                | 207.5   |                 | 183.6  |                | 276.5  | -             | 230.0  |             | 236         |
| 30                    |            | 197.0   |            | 212.0   | -                | 204.5   |                 | 145.2  |                | 280.3  | -             | 212.8  |             | 234         |
| 31                    |            | 197.0   |            | 208.0   | -                | 202.5   |                 | 177.6  |                | 277.8  | -             | 227.7  |             | 231         |
| 32                    |            | 194.0   |            | 206.0   | -                | 221.0   |                 | 167.5  |                | 309.3  | -             | 238.4  |             | 235         |
| 33                    |            | 193.0   |            | 205.0   | -                | 217.0   |                 | 159.9  |                | 283.6  | -             | 221.7  |             | 231         |
| 34                    |            | 193.0   |            | 203.0   | -                | 213.0   |                 | 161.0  |                | 282.3  | -             | 221.6  |             | 234         |
| 35                    |            | 191.0   |            | 200.0   | -                | 215.0   |                 | 162.7  |                | 276.1  | -             | 219.4  |             | 229         |
| 36                    |            | 193.0   |            | 206.0   | -                | 214.0   |                 | 141.9  |                | 318.1  | -             | 230.0  |             | 235         |
| 37                    |            | 194.0   |            | 200.0   | -                | 219.0   |                 | 168.6  |                | 267.2  | -             | 217.9  |             | 233         |
| 38                    |            | 190.0   |            | 197.0   | -                | 222.0   |                 | 162.4  |                | 333.6  | -             | 248.0  |             | 232         |
| 39                    |            | 187.0   |            | 195.0   | -                | 225.0   |                 | 137.2  |                | 299.7  | -             | 218.4  |             | 232         |
| 40                    |            | 185.0   |            | 194.0   | -                | 227.0   |                 | 144.3  |                | 289.7  | -             | 217.0  |             | 231         |
| 41                    |            | 186.0   |            | 194.0   | -                | 229.0   |                 | 134.6  |                | 245.5  | -             | 190.0  |             | 229         |
| 42                    |            | 189.0   |            | 198.0   | -                | 228.0   |                 | 123.5  |                | 271.5  | -             | 197.5  |             | 231         |
| 43                    |            | 184.0   |            | 192.0   | -                | 227.0   |                 | 124.0  |                | 241.9  | -             | 183.0  |             | 225         |
| 44                    |            | 182.0   |            | 190.0   | -                | 225.0   |                 | 120.8  |                | 262.4  | -             | 191.6  |             | 225         |
| 45                    |            | 182.0   |            | 193.0   | -                | 224.0   |                 | 134.3  |                | 247.8  | -             | 191.0  |             | 225         |
| 46                    |            | 183.0   |            | 193.0   | -                | 222.0   |                 | 112.8  |                | 216.0  | -             | 164.4  |             | 225         |
| 47                    |            | 186.0   |            | 194.0   | -                | 221.0   |                 | 141.6  |                | 252.1  | -             | 196.8  |             | 220         |
| 48                    |            | 184.0   |            | 193.0   | -                | 221.0   |                 | 133.8  |                | 222.2  | -             | 178.0  |             | 214         |
| 49                    |            | 185.0   |            | 194.0   | -                | 222.0   |                 | 123.2  |                | 224.6  | -             | 173.9  |             | 220         |
| 50                    |            | 187.0   |            | 194.0   | -                | 228.0   |                 | 122.7  |                | 219.5  | -             | 171.1  |             | 220         |
| 51                    |            | 187.0   |            | 194.0   | -                | 220.0   |                 | 138.0  |                | 255.0  | -             | 196.5  |             | 227         |
| 52                    |            | 187.0   |            | 194.0   | -                | 220.0   |                 | 138.0  |                | 255.0  | -             | 196.5  |             | 227         |
| Year Av               | 204.1      | 194.8   | 209.7      | 205.2   | 206.9            | 212.0   | 133.4           | 140.8  | 221.1          | 248.8  | 177.2         | 194.8  | 235.7       | 232.2       |



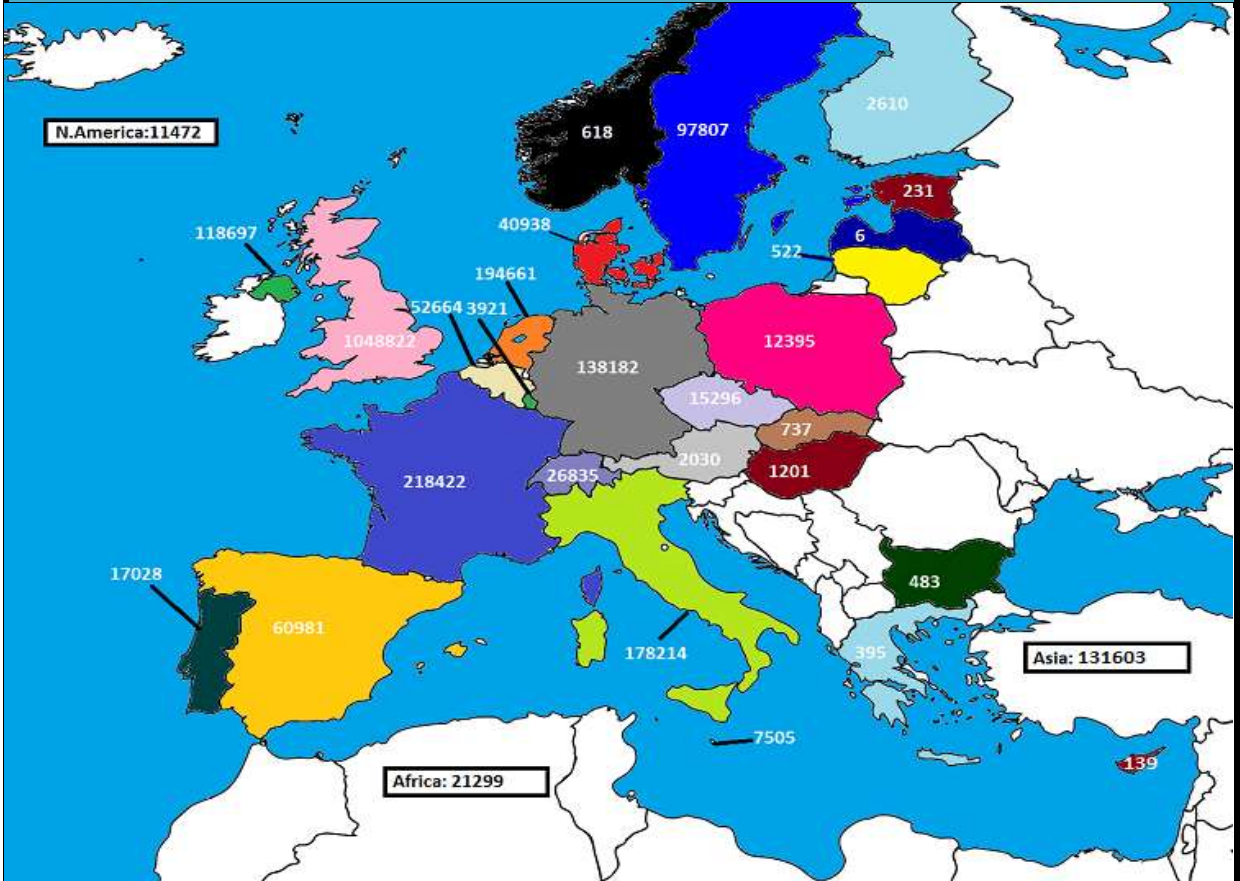
**TOTAL WEEKLY BOVINE SLAUGHTERINGS**

| Week             | Steers         |                | Y Bulls        |                | Bulls         |               | Heifers        |                | Cows           |                | Weekly Total   |                | Cumulative     |                | 2018 vs 2017  |             |
|------------------|----------------|----------------|----------------|----------------|---------------|---------------|----------------|----------------|----------------|----------------|----------------|----------------|----------------|----------------|---------------|-------------|
|                  | 2018           | 2017           | 2018           | 2017           | 2018          | 2017          | 2018           | 2017           | 2018           | 2017           | 2018           | 2017           | 2018           | 2017           | Difference    | %           |
| 1                | 10,299         | 9,409          | 5,173          | 4,716          | 226           | 261           | 9,840          | 8,582          | 4,649          | 5,022          | 30,187         | 27,990         | 30,187         | 27,990         | 2,197         | 7.8%        |
| 2                | 10,255         | 10,489         | 5,661          | 5,295          | 338           | 342           | 10,286         | 9,624          | 6,377          | 6,315          | 32,917         | 32,065         | 63,104         | 60,055         | 3,049         | 5.1%        |
| 3                | 10,847         | 10,306         | 5,886          | 5,348          | 347           | 381           | 9,931          | 9,573          | 6,219          | 6,545          | 33,230         | 32,153         | 96,334         | 92,208         | 4,126         | 4.5%        |
| 4                | 10,860         | 10,869         | 5,600          | 5,302          | 360           | 351           | 10,191         | 9,645          | 6,960          | 6,931          | 33,971         | 33,098         | 130,305        | 125,306        | 4,999         | 4.0%        |
| 5                | 10,430         | 10,953         | 5,869          | 5,515          | 659           | 408           | 9,692          | 9,648          | 7,488          | 7,627          | 34,138         | 34,151         | 164,443        | 159,457        | 4,986         | 3.1%        |
| 6                | 11,153         | 11,172         | 5,737          | 5,290          | 552           | 426           | 10,000         | 10,135         | 7,290          | 7,434          | 34,732         | 34,457         | 199,175        | 193,914        | 5,261         | 2.7%        |
| 7                | 11,871         | 11,963         | 5,038          | 5,299          | 619           | 513           | 9,977          | 9,667          | 7,550          | 7,181          | 35,055         | 34,623         | 234,230        | 228,537        | 5,693         | 2.5%        |
| 8                | 11,168         | 12,537         | 4,871          | 4,581          | 667           | 597           | 10,124         | 10,055         | 7,419          | 7,136          | 34,249         | 34,906         | 268,479        | 263,443        | 5,036         | 1.9%        |
| 9                | 8,844          | 12,884         | 3,533          | 4,348          | 358           | 510           | 7,330          | 9,817          | 4,669          | 7,066          | 24,734         | 34,625         | 293,213        | 298,068        | -4,855        | -1.6%       |
| 10               | 13,330         | 12,524         | 4,966          | 3,688          | 885           | 506           | 9,647          | 9,577          | 7,028          | 7,010          | 35,856         | 33,305         | 329,069        | 331,373        | -2,304        | -0.7%       |
| 11               | 11,949         | 10,950         | 3,797          | 3,049          | 636           | 533           | 10,231         | 8,168          | 7,454          | 5,724          | 34,067         | 28,424         | 363,136        | 359,797        | 3,339         | 0.9%        |
| 12               | 11,691         | 11,892         | 3,314          | 3,295          | 652           | 501           | 9,414          | 9,428          | 6,885          | 6,130          | 31,956         | 31,246         | 395,092        | 391,043        | 4,049         | 1.0%        |
| 13               | 11,850         | 11,508         | 3,477          | 3,089          | 672           | 505           | 9,400          | 8,619          | 7,414          | 6,295          | 32,813         | 30,016         | 427,905        | 421,059        | 6,846         | 1.6%        |
| 14               | 11,757         | 11,923         | 3,058          | 3,075          | 676           | 501           | 9,334          | 8,303          | 7,689          | 6,729          | 32,514         | 30,531         | 460,419        | 451,590        | 8,829         | 2.0%        |
| 15               | 12,542         | 11,692         | 3,275          | 3,193          | 705           | 616           | 9,830          | 8,635          | 8,344          | 5,932          | 34,696         | 30,068         | 495,115        | 481,658        | 13,457        | 2.8%        |
| 16               | 12,585         | 11,259         | 3,024          | 2,823          | 609           | 563           | 9,622          | 8,220          | 7,534          | 5,959          | 33,374         | 28,824         | 528,489        | 510,482        | 18,007        | 3.5%        |
| 17               | 11,745         | 11,661         | 3,261          | 3,805          | 789           | 681           | 9,215          | 8,873          | 7,119          | 6,422          | 32,129         | 31,442         | 560,618        | 541,924        | 18,694        | 3.4%        |
| 18               | 10,971         | 10,532         | 3,500          | 3,401          | 676           | 700           | 8,774          | 8,010          | 7,105          | 6,562          | 31,026         | 29,205         | 591,644        | 571,129        | 20,515        | 3.6%        |
| 19               | 10,593         | 11,333         | 3,367          | 3,688          | 643           | 680           | 8,268          | 8,571          | 6,595          | 6,927          | 29,466         | 31,199         | 621,110        | 602,328        | 18,782        | 3.1%        |
| 20               | 11,309         | 10,022         | 3,871          | 4,022          | 789           | 716           | 8,287          | 8,349          | 6,904          | 8,301          | 31,160         | 31,410         | 652,270        | 633,738        | 18,532        | 2.9%        |
| 21               | 11,287         | 9,983          | 4,345          | 4,418          | 729           | 566           | 8,693          | 8,102          | 6,714          | 8,481          | 31,768         | 31,550         | 684,038        | 665,288        | 18,750        | 2.8%        |
| 22               | 11,017         | 9,494          | 4,469          | 4,802          | 755           | 520           | 8,487          | 7,588          | 7,200          | 10,208         | 31,928         | 32,612         | 715,966        | 697,900        | 18,066        | 2.6%        |
| 23               | 10,581         | 10,209         | 4,925          | 4,087          | 589           | 483           | 7,979          | 7,795          | 7,869          | 8,255          | 31,943         | 30,829         | 747,909        | 728,729        | 19,180        | 2.6%        |
| 24               | 10,780         | 12,133         | 5,196          | 4,542          | 720           | 622           | 9,073          | 8,709          | 8,286          | 8,300          | 34,055         | 34,306         | 781,964        | 763,035        | 18,929        | 2.5%        |
| 25               | 11,086         | 12,455         | 5,066          | 4,563          | 671           | 657           | 8,566          | 8,619          | 8,451          | 7,643          | 33,840         | 33,937         | 815,804        | 796,972        | 18,832        | 2.4%        |
| 26               | 11,127         | 12,571         | 4,302          | 3,776          | 511           | 631           | 8,865          | 9,078          | 9,038          | 7,559          | 33,843         | 33,615         | 849,647        | 830,587        | 19,060        | 2.3%        |
| 27               |                | 12,623         |                | 3,182          |               | 496           |                | 8,224          |                | 7,550          |                | 32,075         | 849,647        | 862,662        | -13,015       | -1.5%       |
| 28               |                | 12,671         |                | 2,685          |               | 648           |                | 7,554          |                | 7,824          |                | 31,382         | 849,647        | 894,044        | -44,397       | -5.0%       |
| 29               |                | 13,061         |                | 2,616          |               | 599           |                | 7,854          |                | 7,711          |                | 31,841         | 849,647        | 925,885        | -76,238       | -8.2%       |
| 30               |                | 14,827         |                | 2,430          |               | 615           |                | 7,720          |                | 6,628          |                | 32,220         | 849,647        | 958,105        | -108,458      | -11.3%      |
| 31               |                | 15,316         |                | 2,186          |               | 601           |                | 7,813          |                | 6,853          |                | 32,769         | 849,647        | 990,874        | -141,227      | -14.3%      |
| 32               |                | 15,067         |                | 1,998          |               | 553           |                | 7,620          |                | 5,961          |                | 31,199         | 849,647        | 1,022,073      | -172,426      | -16.9%      |
| 33               |                | 16,187         |                | 2,472          |               | 647           |                | 8,312          |                | 6,909          |                | 34,527         | 849,647        | 1,056,600      | -206,953      | -19.6%      |
| 34               |                | 16,900         |                | 2,510          |               | 647           |                | 8,272          |                | 6,445          |                | 34,774         | 849,647        | 1,091,374      | -241,727      | -22.1%      |
| 35               |                | 17,136         |                | 2,438          |               | 607           |                | 8,592          |                | 6,833          |                | 35,606         | 849,647        | 1,126,980      | -277,333      | -24.6%      |
| 36               |                | 17,295         |                | 2,053          |               | 675           |                | 8,582          |                | 6,819          |                | 35,424         | 849,647        | 1,162,404      | -312,757      | -26.9%      |
| 37               |                | 17,726         |                | 2,212          |               | 626           |                | 8,430          |                | 7,054          |                | 36,048         | 849,647        | 1,198,452      | -348,805      | -29.1%      |
| 38               |                | 18,658         |                | 2,041          |               | 567           |                | 8,094          |                | 6,726          |                | 36,086         | 849,647        | 1,234,538      | -384,891      | -31.2%      |
| 39               |                | 19,222         |                | 2,183          |               | 588           |                | 8,645          |                | 6,753          |                | 37,391         | 849,647        | 1,271,929      | -422,282      | -33.2%      |
| 40               |                | 18,242         |                | 2,259          |               | 538           |                | 8,860          |                | 7,740          |                | 37,639         | 849,647        | 1,309,568      | -459,921      | -35.1%      |
| 41               |                | 17,547         |                | 2,632          |               | 669           |                | 9,178          |                | 8,143          |                | 38,169         | 849,647        | 1,347,737      | -498,090      | -37.0%      |
| 42               |                | 16,991         |                | 2,866          |               | 521           |                | 8,453          |                | 7,291          |                | 36,122         | 849,647        | 1,383,859      | -534,212      | -38.6%      |
| 43               |                | 15,893         |                | 3,405          |               | 504           |                | 8,803          |                | 8,751          |                | 37,356         | 849,647        | 1,421,215      | -571,568      | -40.2%      |
| 44               |                | 13,503         |                | 3,039          |               | 549           |                | 8,215          |                | 7,726          |                | 33,032         | 849,647        | 1,454,247      | -604,600      | -41.6%      |
| 45               |                | 15,682         |                | 4,000          |               | 591           |                | 9,884          |                | 8,302          |                | 38,459         | 849,647        | 1,492,706      | -643,059      | -43.1%      |
| 46               |                | 14,960         |                | 4,452          |               | 541           |                | 10,303         |                | 8,934          |                | 39,190         | 849,647        | 1,531,896      | -682,249      | -44.5%      |
| 47               |                | 13,976         |                | 5,540          |               | 568           |                | 10,794         |                | 8,857          |                | 39,735         | 849,647        | 1,571,631      | -721,984      | -45.9%      |
| 48               |                | 13,586         |                | 5,684          |               | 528           |                | 11,532         |                | 9,143          |                | 40,473         | 849,647        | 1,612,104      | -762,457      | -47.3%      |
| 49               |                | 12,769         |                | 6,545          |               | 522           |                | 11,072         |                | 8,413          |                | 39,321         | 849,647        | 1,651,425      | -801,778      | -48.6%      |
| 50               |                | 12,576         |                | 6,265          |               | 564           |                | 10,975         |                | 7,632          |                | 38,012         | 849,647        | 1,689,437      | -839,790      | -49.7%      |
| 51               |                | 9,653          |                | 5,047          |               | 350           |                | 9,552          |                | 6,635          |                | 31,237         |                | 1,720,674      | -1,720,674    | -100.0%     |
| 52               |                | 6,383          |                | 4,222          |               | 117           |                | 5,513          |                | 2,692          |                | 18,927         |                | 1,739,601      | -1,739,601    | -100.0%     |
| <b>TOTAL YTD</b> | <b>291,927</b> | <b>292,723</b> | <b>114,581</b> | <b>109,010</b> | <b>15,833</b> | <b>13,770</b> | <b>241,056</b> | <b>231,390</b> | <b>186,250</b> | <b>183,694</b> | <b>849,647</b> | <b>830,587</b> | <b>849,647</b> | <b>830,587</b> | <b>19,060</b> | <b>2.3%</b> |

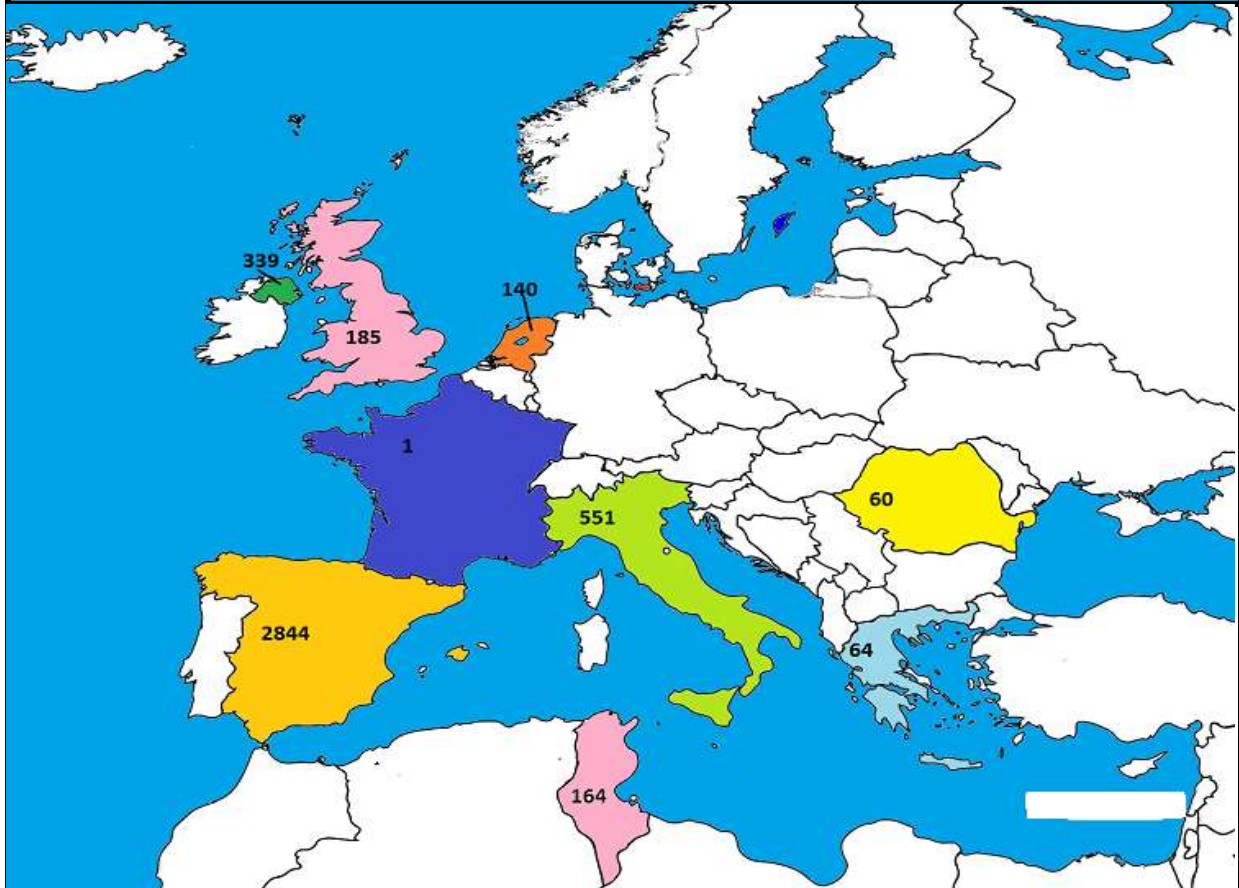
**April 2018 Beef exports, €000 (CSO figures)**



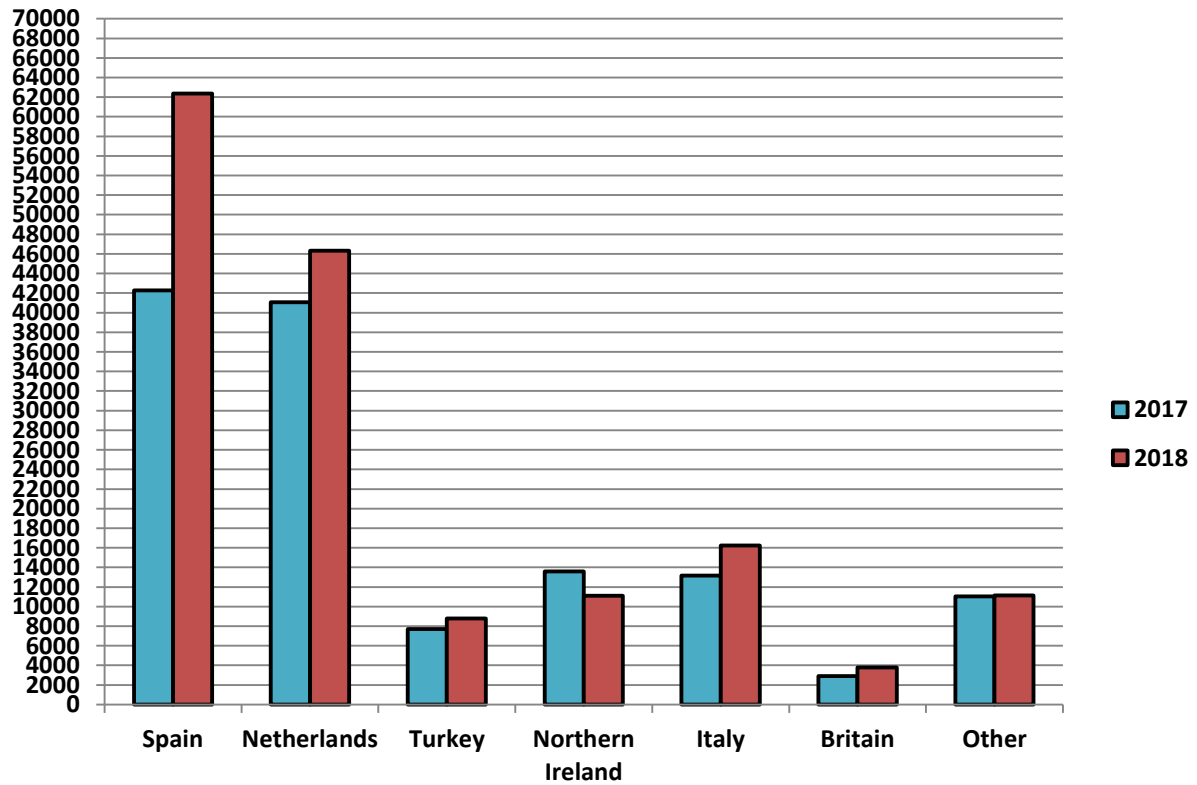
**Cumulative beef exports to Dec 2017, €000 (CSO figures)**



Cattle exported, w/c 11/06/18

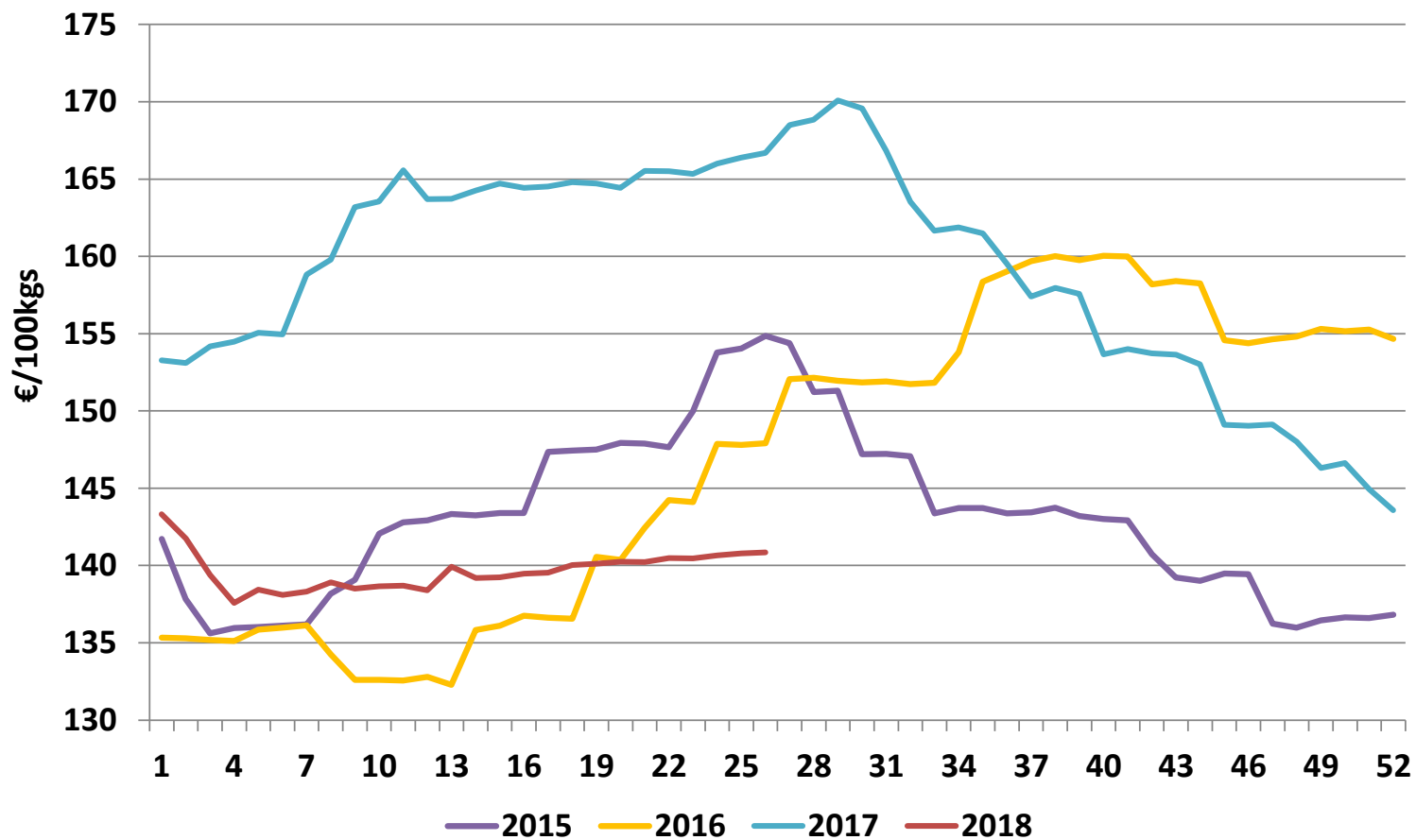


Cumulative cattle export figures, 2018

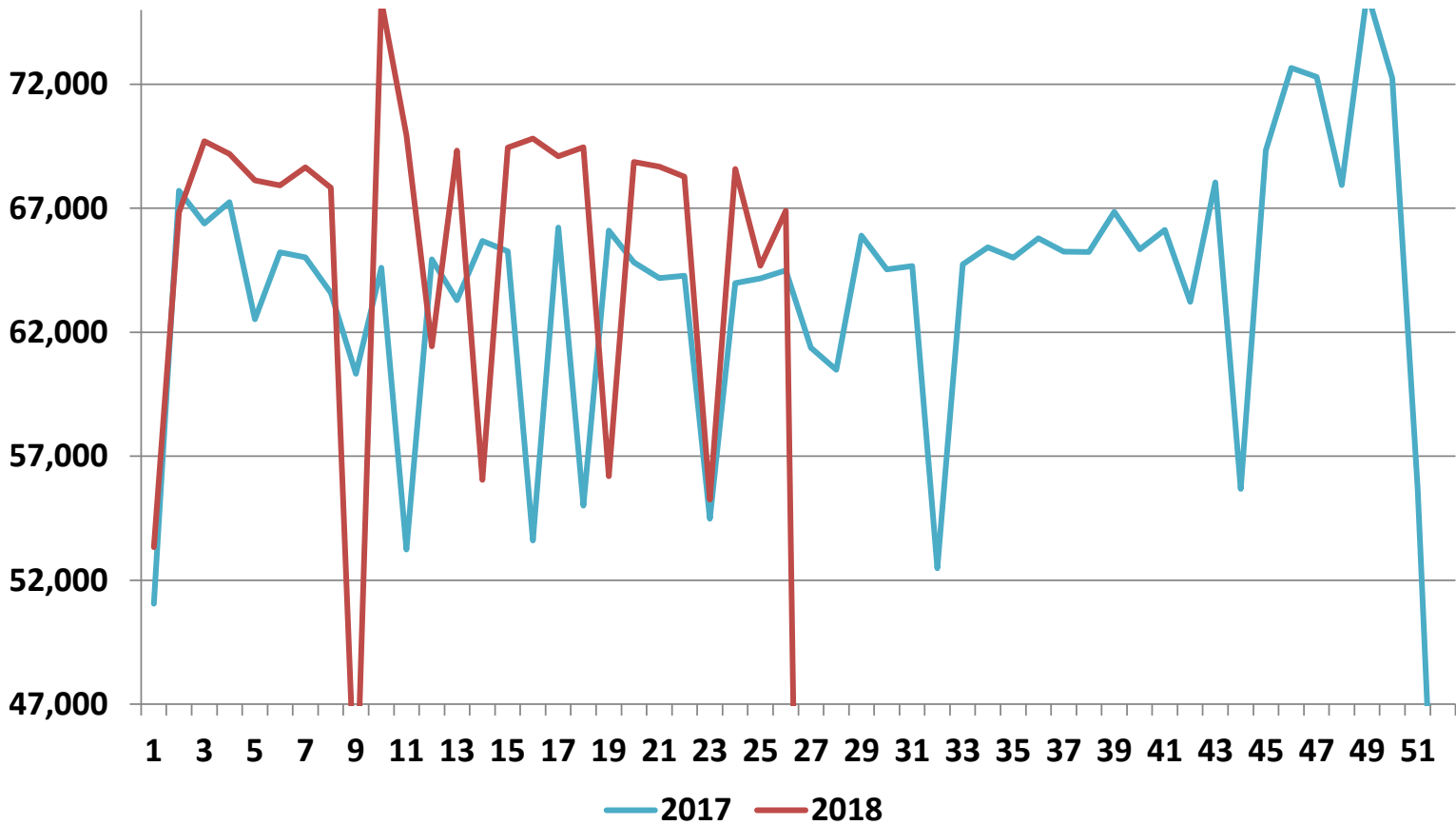


| Irish Average Grade E Pig Prices - €/100kgs |               |          |          |        |        |        |
|---|---------------|----------|----------|--------|--------|--------|
| Week  | 2018          | Weekly % | % change | 2017   | 2016   | 2015   |
| 1   | 143.31        |          | -6.5%    | 153.27 | 135.34 | 141.72 |
| 2   | 141.76        | -1.1%    | -7.4%    | 153.10 | 135.28 | 137.83 |
| 3   | 139.39        | -1.7%    | -9.6%    | 154.17 | 135.18 | 135.62 |
| 4   | 137.57        | -1.3%    | -10.9%   | 154.48 | 135.12 | 135.95 |
| 5   | 138.43        | 0.6%     | -10.7%   | 155.06 | 135.84 | 136.01 |
| 6   | 138.10        | -0.2%    | -10.9%   | 154.96 | 135.98 | 136.10 |
| 7   | 138.30        | 0.1%     | -12.9%   | 158.82 | 136.13 | 136.19 |
| 8   | 138.92        | 0.4%     | -13.1%   | 159.79 | 134.25 | 138.17 |
| 9   | 138.51        | -0.3%    | -15.1%   | 163.19 | 132.61 | 139.08 |
| 10  | 138.66        | 0.1%     | -15.2%   | 163.55 | 132.61 | 142.06 |
| 11  | 138.69        | 0.0%     | -16.2%   | 165.58 | 132.55 | 142.79 |
| 12  | 138.40        | -0.2%    | -15.5%   | 163.71 | 132.79 | 142.93 |
| 13  | 139.93        | 1.1%     | -14.5%   | 163.72 | 132.27 | 143.34 |
| 14  | 139.20        | -0.5%    | -15.3%   | 164.25 | 135.82 | 143.25 |
| 15  | <b>139.23</b> | 0.0%     | -15.5%   | 164.71 | 136.11 | 143.40 |
| 16  | 139.47        | 0.2%     | -15.2%   | 164.43 | 136.75 | 143.39 |
| 17  | 139.54        | 0.1%     | -15.2%   | 164.52 | 136.62 | 147.34 |
| 18  | 140.02        | 0.3%     | -15.0%   | 164.80 | 136.56 | 147.43 |
| 19  | 140.12        | 0.1%     | -14.9%   | 164.71 | 140.56 | 147.49 |
| 20  | 140.25        | 0.1%     | -14.7%   | 164.42 | 140.36 | 147.93 |
| 21  | <b>140.22</b> | 0.0%     | -15.3%   | 165.52 | 142.42 | 147.89 |
| 22  | 140.48        | 0.2%     | -15.1%   | 165.50 | 144.24 | 147.66 |
| 23  | 140.47        | 0.0%     | -15.0%   | 165.33 | 144.11 | 150.00 |
| 24  | 140.66        | 0.1%     | -15.3%   | 165.99 | 147.86 | 153.77 |
| 25  | 140.79        | 0.1%     | -15.4%   | 166.39 | 147.80 | 154.04 |
| 26  | 140.84        | 0.0%     | -15.5%   | 166.68 | 147.91 | 154.86 |
| 27  |               |          |          | 168.50 | 152.06 | 154.38 |
| 28  |               |          |          | 168.83 | 152.15 | 151.22 |
| 29  |               |          |          | 170.09 | 151.95 | 151.30 |
| 30  |               |          |          | 169.56 | 151.85 | 147.19 |
| 31  |               |          |          | 166.84 | 151.90 | 147.23 |
| 32  |               |          |          | 163.53 | 151.74 | 147.08 |
| 33  |               |          |          | 161.65 | 151.82 | 143.37 |
| 34  |               |          |          | 161.88 | 153.80 | 143.71 |
| 35  |               |          |          | 161.49 | 158.35 | 143.71 |
| 36  |               |          |          | 159.53 | 159.03 | 143.37 |
| 37  |               |          |          | 157.41 | 159.69 | 143.44 |
| 38  |               |          |          | 157.97 | 160.01 | 143.73 |
| 39  |               |          |          | 157.57 | 159.75 | 143.21 |
| 40  |               |          |          | 153.65 | 160.04 | 143.00 |
| 41  |               |          |          | 154.00 | 159.99 | 142.93 |
| 42  |               |          |          | 153.73 | 158.19 | 140.72 |
| 43  |               |          |          | 153.64 | 158.39 | 139.23 |
| 44  |               |          |          | 153.01 | 158.26 | 139.01 |
| 45  |               |          |          | 149.10 | 154.57 | 139.48 |
| 46  |               |          |          | 149.04 | 154.38 | 139.43 |
| 47  |               |          |          | 149.13 | 154.63 | 136.23 |
| 48  |               |          |          | 148.01 | 154.82 | 135.97 |
| 49  |               |          |          | 146.30 | 155.30 | 136.45 |
| 50  |               |          |          | 146.62 | 155.16 | 136.64 |
| 51  |               |          |          | 144.94 | 155.26 | 136.60 |
| 52  |               |          |          | 143.57 | 154.66 | 136.82 |
| <b>53</b>                                   |               |          |          |        |        | 135.67 |

### Average Grade E Pig Price



### Pig Slaughtering Figures



# Pigmeat Industry Overview

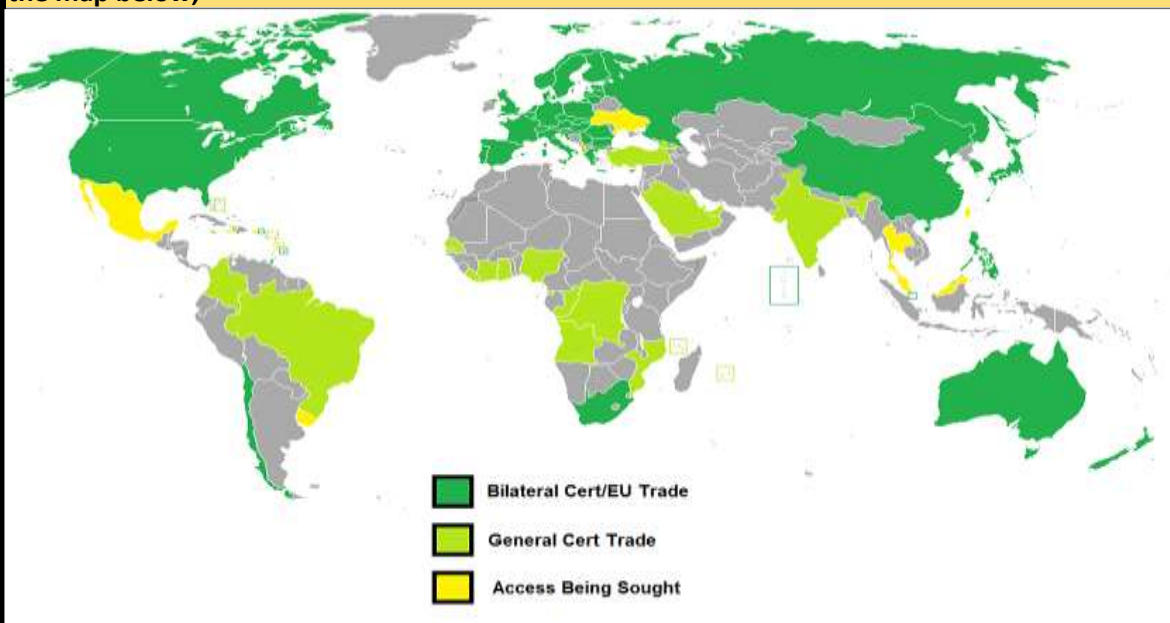
· CSO figures show that last year, Ireland exported 276,000 tonnes of pigmeat products (including prepared food) worth approximately €791m, comprising 6% of overall agri-food exports. This represents a rise of 8% in value terms when compared to 2016.

· Ireland's largest export market by far was the United Kingdom, accounting for approximately 56% of the total, followed by China, at 7%. Denmark, Germany and Japan were next, together comprising roughly 1.25% of export values.

· The Irish pig industry is characterised by large, indoor commercial farms with no 'bought in' animals. However, roughly 1,500 small scale farmers are registered with the Department of Agriculture, so a modest outdoor sector does exist.

· In 2017, 3.3m pigs were slaughtered in Irish export-approved plants, a rise of 1.2% compared to the previous year.

· Irish pigmeat exporters have access to a wide range of markets across the globe, as can be seen in the map below;



· EU production is predicted hold steady into 2019, exports to drop, imports rise and consumption to stay the same, according to the EU Commission's short-term outlook. The EU pig herd grew by 1.4% last year by head count. However, a decline in volume of 0.8% was observed. EU exports globally are projected to rise by 2.5% this year.

· EU Exports to China declined by 9% to 2.6m tonnes following the all-time highs of 2016, but still remained well above the 2015 levels. China accounted for 28% of EU exports last year, down 10% from 2016. The EU supplied 56% of China's pork imports last year.

· In April, China announced the imposition of 25% tariffs on US pork imports in retaliation for American tariffs on Chinese metals.

· According to OECD figures, the EU is the world's largest consumer of pigmeat at 32.5kg per capita, followed closely by China (30.8kg), Vietnam (29kg), South Korea (28.7kg) and the USA (23.6kg). In general terms, consumption is high in Europe, East Asia and the Americas, and low in the Islamic world and Africa.



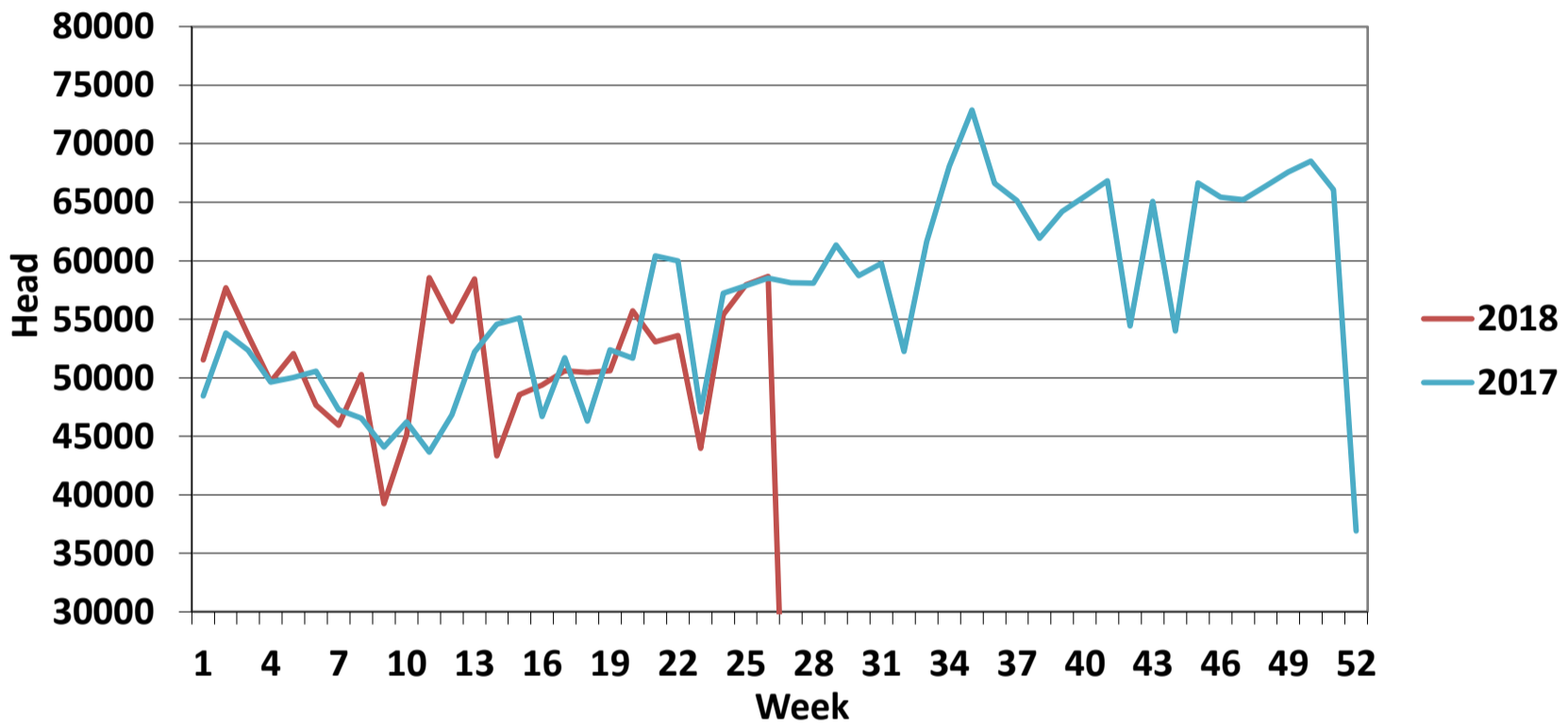
**Pig Slaughtering Figures at Export Approved Plants**

| 2018                 |                  |               |                  |           |           |        | 2017                 |                  |               |                  |           |
|----------------------|------------------|---------------|------------------|-----------|-----------|--------|----------------------|------------------|---------------|------------------|-----------|
| Week                 | Pigs             | Sows          | Total            | Cum       | 2018v2017 | % Diff | Week                 | Pigs             | Sows          | Total            | Cum       |
| 1                    | 51,490           | 1,839         | 53,329           | 53,329    | 2,278     | 4%     | 1                    | 49,383           | 1,668         | 51,051           | 51,051    |
| 2                    | 64,796           | 2,031         | 66,827           | 120,156   | 1,397     | 1%     | 2                    | 65,598           | 2,110         | 67,708           | 118,759   |
| 3                    | 68,008           | 1,702         | 69,710           | 189,866   | 4,724     | 3%     | 3                    | 64,274           | 2,109         | 66,383           | 185,142   |
| 4                    | 67,302           | 1,883         | 69,185           | 259,051   | 6,667     | 3%     | 4                    | 65,467           | 1,775         | 67,242           | 252,384   |
| 5                    | 65,886           | 2,242         | 68,128           | 327,179   | 12,275    | 4%     | 5                    | 60,873           | 1,647         | 62,520           | 314,904   |
| 6                    | 66,072           | 1,852         | 67,924           | 395,103   | 14,969    | 4%     | 6                    | 63,771           | 1,459         | 65,230           | 380,134   |
| 7                    | 66,751           | 1,903         | 68,654           | 463,757   | 18,596    | 4%     | 7                    | 63,289           | 1,738         | 65,027           | 445,161   |
| 8                    | 65,920           | 1,905         | 67,825           | 531,582   | 22,825    | 4%     | 8                    | 61,999           | 1,597         | 63,596           | 508,757   |
| 9                    | 41,794           | 359           | 42,153           | 573,735   | 4,657     | 1%     | 9                    | 58,513           | 1,808         | 60,321           | 569,078   |
| 10                   | 72,970           | 2,385         | 75,355           | 649,090   | 15,415    | 2%     | 10                   | 63,238           | 1,359         | 64,597           | 633,675   |
| 11                   | 68,008           | 1,937         | 69,945           | 719,035   | 32,121    | 5%     | 11                   | 51,558           | 1,681         | 53,239           | 686,914   |
| 12                   | 59,506           | 1,925         | 61,431           | 780,466   | 28,610    | 4%     | 12                   | 63,182           | 1,760         | 64,942           | 751,856   |
| 13                   | 67,692           | 1,634         | 69,326           | 849,792   | 34,641    | 4%     | 13                   | 61,444           | 1,851         | 63,295           | 815,151   |
| 14                   | 54,379           | 1,673         | 56,052           | 905,844   | 25,012    | 3%     | 14                   | 63,895           | 1,786         | 65,681           | 880,832   |
| 15                   | 67,346           | 2,105         | 69,451           | 975,295   | 29,193    | 3%     | 15                   | 63,474           | 1,796         | 65,270           | 946,102   |
| 16                   | 67,791           | 2,022         | 69,813           | 1,045,108 | 45,396    | 5%     | 16                   | 51,998           | 1,612         | 53,610           | 999,712   |
| 17                   | 67,224           | 1,875         | 69,099           | 1,114,207 | 48,275    | 5%     | 17                   | 63,977           | 2,243         | 66,220           | 1,065,932 |
| 18                   | 67,453           | 2,011         | 69,464           | 1,183,671 | 62,728    | 6%     | 18                   | 53,557           | 1,454         | 55,011           | 1,120,943 |
| 19                   | 54,510           | 1,682         | 56,192           | 1,239,863 | 52,823    | 4%     | 19                   | 64,247           | 1,850         | 66,097           | 1,187,040 |
| 20                   | 67,150           | 1,723         | 68,873           | 1,308,736 | 56,882    | 5%     | 20                   | 63,028           | 1,786         | 64,814           | 1,251,854 |
| 21                   | 66,590           | 2,092         | 68,682           | 1,377,418 | 61,375    | 5%     | 21                   | 62,150           | 2,039         | 64,189           | 1,316,043 |
| 22                   | 66,404           | 1,871         | 68,275           | 1,445,693 | 65,366    | 5%     | 22                   | 62,840           | 1,444         | 64,284           | 1,380,327 |
| 23                   | 53,696           | 1,549         | 55,245           | 1,500,938 | 66,132    | 5%     | 23                   | 52,834           | 1,645         | 54,479           | 1,434,806 |
| 24                   | 66,779           | 1,807         | 68,586           | 1,569,524 | 70,738    | 5%     | 24                   | 62,294           | 1,686         | 63,980           | 1,498,786 |
| 25                   | 62,897           | 1,791         | 64,688           | 1,634,212 | 71,258    | 5%     | 25                   | 62,455           | 1,713         | 64,168           | 1,562,954 |
| 26                   | 65,378           | 1,521         | 66,899           | 1,701,111 | 73,662    | 5%     | 26                   | 62,554           | 1,941         | 64,495           | 1,627,449 |
| 27                   |                  |               |                  |           |           |        | 27                   | 59,582           | 1,802         | 61,384           | 1,688,833 |
| 28                   |                  |               |                  |           |           |        | 28                   | 58,904           | 1,587         | 60,491           | 1,749,324 |
| 29                   |                  |               |                  |           |           |        | 29                   | 64,112           | 1,790         | 65,902           | 1,815,226 |
| 30                   |                  |               |                  |           |           |        | 30                   | 62,572           | 1,967         | 64,539           | 1,879,765 |
| 31                   |                  |               |                  |           |           |        | 31                   | 62,929           | 1,745         | 64,674           | 1,944,439 |
| 32                   |                  |               |                  |           |           |        | 32                   | 50,933           | 1,545         | 52,478           | 1,996,917 |
| 33                   |                  |               |                  |           |           |        | 33                   | 62,812           | 1,928         | 64,740           | 2,061,657 |
| 34                   |                  |               |                  |           |           |        | 34                   | 63,823           | 1,603         | 65,426           | 2,127,083 |
| 35                   |                  |               |                  |           |           |        | 35                   | 62,962           | 2,045         | 65,007           | 2,192,090 |
| 36                   |                  |               |                  |           |           |        | 36                   | 63,686           | 2,109         | 65,795           | 2,257,885 |
| 37                   |                  |               |                  |           |           |        | 37                   | 63,255           | 1,990         | 65,245           | 2,323,130 |
| 38                   |                  |               |                  |           |           |        | 38                   | 63,581           | 1,659         | 65,240           | 2,388,370 |
| 39                   |                  |               |                  |           |           |        | 39                   | 64,972           | 1,878         | 66,850           | 2,455,220 |
| 40                   |                  |               |                  |           |           |        | 40                   | 63,493           | 1,850         | 65,343           | 2,520,563 |
| 41                   |                  |               |                  |           |           |        | 41                   | 64,269           | 1,863         | 66,132           | 2,586,695 |
| 42                   |                  |               |                  |           |           |        | 42                   | 61,459           | 1,770         | 63,229           | 2,649,924 |
| 43                   |                  |               |                  |           |           |        | 43                   | 66,014           | 2,035         | 68,049           | 2,717,973 |
| 44                   |                  |               |                  |           |           |        | 44                   | 53,954           | 1,733         | 55,687           | 2,773,660 |
| 45                   |                  |               |                  |           |           |        | 45                   | 67,519           | 1,823         | 69,342           | 2,843,002 |
| 46                   |                  |               |                  |           |           |        | 46                   | 70,899           | 1,763         | 72,662           | 2,915,664 |
| 47                   |                  |               |                  |           |           |        | 47                   | 70,337           | 1,951         | 72,288           | 2,987,952 |
| 48                   |                  |               |                  |           |           |        | 48                   | 66,269           | 1,671         | 67,940           | 3,055,892 |
| 49                   |                  |               |                  |           |           |        | 49                   | 73,743           | 1,936         | 75,679           | 3,131,571 |
| 50                   |                  |               |                  |           |           |        | 50                   | 69,984           | 2,251         | 72,235           | 3,203,806 |
| 51                   |                  |               |                  |           |           |        | 51                   | 55,083           | 590           | 55,673           | 3,259,479 |
| 52                   |                  |               |                  |           |           |        | 52                   | 31,853           | 901           | 32,754           | 3,292,233 |
| 53                   |                  |               |                  |           |           |        | 53                   |                  |               |                  |           |
| <b>Overall Total</b> | <b>1,653,792</b> | <b>47,319</b> | <b>1,701,111</b> |           |           |        | <b>Overall Total</b> | <b>3,200,891</b> | <b>91,342</b> | <b>3,292,233</b> |           |

**REPORT ON SLAUGHTERING AT SHEEP EXPORT PREMISES  
WEEK 26**

| CATEGORY      | 2018          |                  | 2017          |                  | DIFFERENCE |              | % Differences<br>2018 vs 2017 |            |
|---------------|---------------|------------------|---------------|------------------|------------|--------------|-------------------------------|------------|
|               | Weekly        | Cumulative       | Weekly        | Cumulative       | Weekly     | Cumulative   | Weekly                        | Cumulative |
| Lambs/Hoggets | 1,240         | 825,759          | 958           | 804,049          | 282        | 21,710       | 29%                           | 3%         |
| Spring Lambs  | 48,249        | 291,150          | 49,408        | 346,992          | -1,159     | 55,842       | -2%                           | -16%       |
| Ewes and Rams | 9,156         | 218,862          | 8,123         | 179,704          | 1,033      | 39,158       | 13%                           | 22%        |
| Light Lambs   | 4             | 125              | 22            | 470              | -18        | 345          | -82%                          | -73%       |
| <b>TOTAL</b>  | <b>58,649</b> | <b>1,335,896</b> | <b>58,511</b> | <b>1,331,215</b> | <b>138</b> | <b>4,681</b> | <b>0%</b>                     | <b>0%</b>  |

**Weekly Sheep Slaughtering**

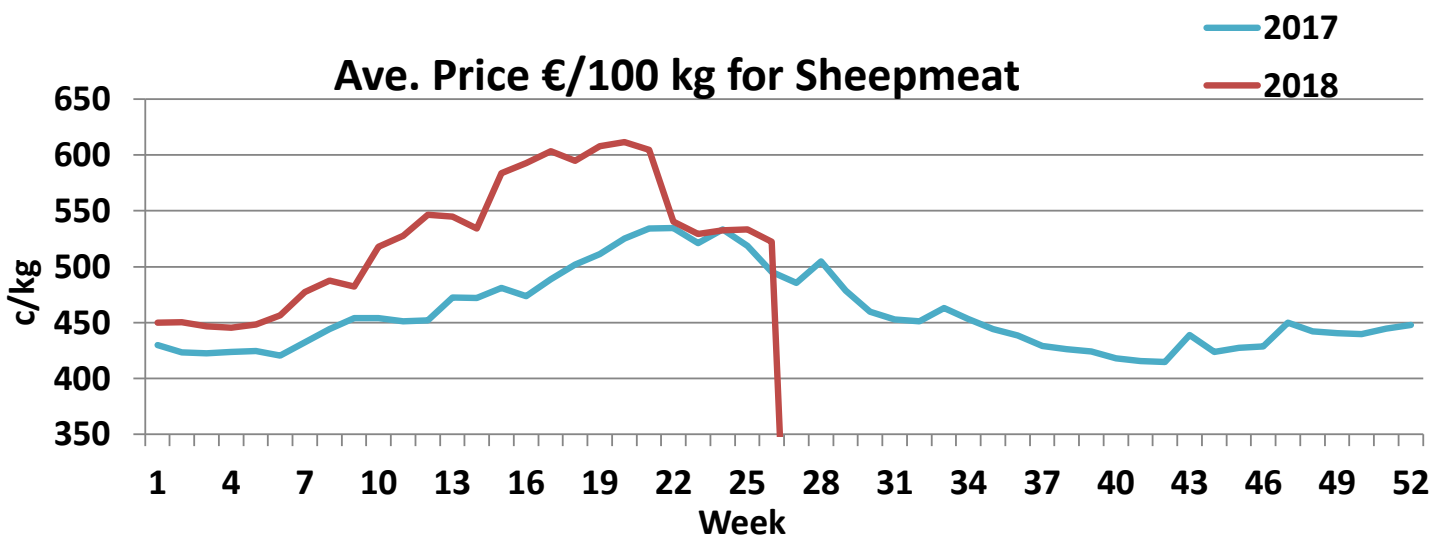


Sheepmeat Information for week 26

| Irish Prices €/100 kg | 2018   | 2017   | Change |
|-----------------------|--------|--------|--------|
| Ave Factory Price     | 552.50 | 519.47 | 6.4%   |
| Ave Mart Price        | 452.31 | 438.87 | 3.1%   |
| National Ave Price    | 522.44 | 495.29 | 5.5%   |
| YTD Ave               | 525.87 | 472.95 | 11.2%  |

| Slaughterings | 2018      | 2017      | Change |
|---------------|-----------|-----------|--------|
| Weekly        | 58,649    | 58,511    | 0%     |
| YTD           | 1,335,896 | 1,331,215 | 0%     |

| EU Market Rates Heavy Lambs | €/100kg | % of Community Price |
|-----------------------------|---------|----------------------|
| Belgium                     | 562.7   | 102%                 |
| Denmark                     | 566.6   | 102%                 |
| Germany                     | 587.6   | 106%                 |
| Spain                       | 502.4   | 91%                  |
| France                      | 629.0   | 114%                 |
| Hungary                     | 551.3   | 100%                 |
| Ireland                     | 522.4   | 94%                  |
| Italy                       | 467.0   | 84%                  |
| Cyprus                      | 451.0   | 82%                  |
| Latvia                      | 376.3   | 68%                  |
| Lithuania                   | 406.2   | 73%                  |
| Netherlands                 | 487.9   | 88%                  |
| Austria                     | 572.0   | 103%                 |
| Poland                      | 355.9   | 64%                  |
| Romania                     | 211.0   | 38%                  |
| Finland                     | 383.2   | 69%                  |
| Sweden                      | 531.2   | 96%                  |
| Northern Ireland            | 507.0   | 92%                  |
| Great Britain               | 561.6   | 102%                 |
| United Kingdom              | 557.7   | 101%                 |
| Community                   | 552.9   | 100%                 |





| Comparison of Poultry Slaughter Figures Between 2018 and 2017 |             |                 |             |                 |             |              |
|---|-------------|-----------------|-------------|-----------------|-------------|--------------|
| WEEK  | 2018 weekly | 2018 cumulative | 2017 weekly | 2017 cumulative | 2017 v 2018 | % difference |
| 1   | 1,625,961   | 1,625,961       | 1,800,752   | 1,800,752       | -174,791    | -9.7%        |
| 2   | 1,969,356   | 3,595,317       | 1,855,926   | 3,656,678       | -61,361     | -1.7%        |
| 3   | 1,932,194   | 5,527,511       | 1,904,859   | 5,561,537       | -34,026     | -0.6%        |
| 4   | 1,886,770   | 7,414,281       | 1,885,286   | 7,446,823       | -32,542     | -0.4%        |
| 5   | 1,800,824   | 9,215,105       | 1,831,229   | 9,278,052       | -62,947     | -0.7%        |
| 6   | 1,813,024   | 11,028,129      | 1,777,430   | 11,055,482      | -27,353     | -0.2%        |
| 7   | 1,808,499   | 12,836,628      | 1,859,200   | 12,914,682      | -78,054     | -0.6%        |
| 8   | 1,922,060   | 14,758,688      | 1,808,065   | 14,722,747      | 35,941      | 0.2%         |
| 9   | 1,557,975   | 16,316,663      | 1,768,257   | 16,491,004      | -174,341    | -1.1%        |
| 10  | 2,159,284   | 18,475,947      | 1,842,204   | 18,333,208      | 142,739     | 0.8%         |
| 11  | 1,957,072   | 20,433,019      | 1,709,219   | 20,042,427      | 390,592     | 1.9%         |
| 12  | 1,734,665   | 22,126,409      | 1,868,499   | 21,910,926      | 215,483     | 1.0%         |
| 13  | 1,874,839   | 24,001,248      | 1,823,125   | 23,734,051      | 267,197     | 1.1%         |
| 14  | 1,755,145   | 25,756,393      | 1,766,109   | 25,500,160      | 256,233     | 1.0%         |
| 15  | 1,963,967   | 27,720,360      | 1,770,716   | 27,270,876      | 449,484     | 1.6%         |
| 16  | 2,008,587   | 29,728,947      | 1,654,606   | 28,925,482      | 803,465     | 2.8%         |
| 17  | 1,994,979   | 31,723,926      | 1,969,576   | 30,895,058      | 828,868     | 2.7%         |
| 18  | 1,944,920   | 33,668,846      | 1,717,922   | 32,612,980      | 1,055,866   | 3.2%         |
| 19  | 1,749,772   | 35,418,618      | 1,867,134   | 34,480,114      | 938,504     | 2.7%         |
| 20  | 2,007,305   | 37,425,923      | 1,841,906   | 36,322,020      | 1,103,903   | 3.0%         |
| 21  | 1,948,360   | 39,374,283      | 1,799,032   | 38,121,052      | 1,253,231   | 3.3%         |
| 22  | 1,965,217   | 41,339,500      | 1,831,652   | 39,952,704      | 1,386,796   | 3.5%         |
| 23  | 1,726,225   | 43,065,725      | 1,813,217   | 41,765,921      | 1,299,804   | 3.1%         |
| 24  | 1,881,726   | 44,988,726      | 1,880,162   | 43,646,083      | 1,342,643   | 3.1%         |
| 25  | 1,896,280   | 46,843,731      | 1,846,871   | 45,492,954      | 1,350,777   | 3.0%         |
| 26  | 1,934,425   | 48,786,157      | 1,821,416   | 47,314,370      | 1,471,787   | 3.1%         |
| 27  |             |                 |             |                 |             |              |
| 28  |             |                 |             |                 |             |              |
| 29  |             |                 |             |                 |             |              |
| 30  |             |                 |             |                 |             |              |
| 31  |             |                 |             |                 |             |              |
| 32  |             |                 |             |                 |             |              |
| 33  |             |                 |             |                 |             |              |
| 34  |             |                 |             |                 |             |              |
| 35  |             |                 |             |                 |             |              |
| 36  |             |                 |             |                 |             |              |
| 37  |             |                 |             |                 |             |              |
| 38  |             |                 |             |                 |             |              |
| 39  |             |                 |             |                 |             |              |
| 40  |             |                 |             |                 |             |              |
| 41  |             |                 |             |                 |             |              |
| 42  |             |                 |             |                 |             |              |
| 43  |             |                 |             |                 |             |              |
| 44  |             |                 |             |                 |             |              |
| 45  |             |                 |             |                 |             |              |
| 46  |             |                 |             |                 |             |              |
| 47  |             |                 |             |                 |             |              |
| 48  |             |                 |             |                 |             |              |
| 49  |             |                 |             |                 |             |              |
| 50  |             |                 |             |                 |             |              |
| 51  |             |                 |             |                 |             |              |
| 52  |             |                 |             |                 |             |              |